

# **Environment and Prosperity Scrutiny Committee**

## **Agenda**

---

**Date:** Wednesday, 25th November, 2009  
**Time:** 10.00 am  
**Venue:** Committee Suite 1,2 & 3, Westfields, Middlewich Road,  
Sandbach CW11 1HZ

---

The agenda is divided into 2 parts. Part 1 is taken in the presence of the public and press. Part 2 items will be considered in the absence of the public and press for the reasons indicated on the agenda and at the foot of each report.

### **PART 1 – MATTERS TO BE CONSIDERED WITH THE PUBLIC AND PRESS PRESENT**

1. **Apologies for Absence**

2. **Declarations of Interest**

To provide an opportunity for Members and Officers to declare any personal and/or prejudicial interests in any item on the agenda

3. **Public Speaking Time/ Open Session**

A total period of 15 minutes is allocated for members of the public to make a statement(s) on any matter that falls within the remit of the Committee.

Individual members of the public may speak for up to 5 minutes, but the Chairman will decide how the period of time allocated for public speaking will be apportioned, where there are a number of speakers

4. **Minutes of Previous Meeting** (Pages 1 - 6)

To approve the minutes of the meeting held on 23 September 2009 as a correct record.

---

For any apologies or requests for further information, or to give notice of a question to be asked by a member of the public

**Contact:** Katie Smith  
**Tel:** 01270 529771  
**E-Mail:** [katie.smith@cheshireeast.gov.uk](mailto:katie.smith@cheshireeast.gov.uk)

5. **Performance Indicators**

To receive an update on the Performance Indicators which fall within the remit of the Committee

6. **The New Sub Regional Architecture** (Pages 7 - 10)

To give consideration to the approach being adopted in setting up the new sub regional architecture.

7. **Preparing an Economic Development Strategy for Cheshire East** (Pages 11 - 16)

To receive a presentation and endorse the approach outlined on the draft Economic Development Strategy for Cheshire East

8. **A Visitor Economy Strategic Framework for Cheshire East** (Pages 17 - 24)

To give consideration to the above developing strategy

9. **Integrated Transport Service**

To receive a presentation by the Head of Regeneration

10. **Climate Change Briefing** (Pages 25 - 30)

To endorse the Council's approach to the climate change agenda to date

11. **Cheshire Replacement Waste Local Plan - Saved Policies** (Pages 31 - 56)

To give consideration to a report on the policies of the Cheshire Replacement Waste Local Plan

12. **Local Development Framework: Annual Monitoring Report** (Pages 57 - 70)

To give consideration to the Annual Monitoring Report

13. **Forward Plan** (Pages 71 - 74)

To give consideration to the areas of the forward plan which fall within the remit of the Committee

14. **Work Programme** (Pages 75 - 78)

To give consideration to the work programme

## **CHESHIRE EAST COUNCIL**

### **Minutes of a meeting of the Environment and Prosperity Scrutiny Committee**

held on Wednesday, 23rd September, 2009 at Committee Suite 1,2 & 3,  
Westfields, Middlewich Road, Sandbach CW11 1HZ

#### **PRESENT**

Councillor G M Walton (Chairman)

Councillors Rachel Bailey, G Barton, H Davenport, R Fletcher, M Hardy,  
M Hollins, R Menlove, M Parsons, C Thorley and J Weatherill

#### **Apologies**

Apologies for absence were received from Councillors S Broadhurst and E N Gilliland.

#### **24 DECLARATIONS OF INTEREST/WHIPPING DECLARATIONS**

None

#### **25 PUBLIC SPEAKING TIME/ OPEN SESSION**

None

#### **26 MINUTES OF PREVIOUS MEETING**

Consideration was given to the minutes of the meeting held on 6 August 2009.

##### **RESOLVED**

That the minutes of the meeting be approved as a correct record and signed by the Chairman

#### **27 PERFORMANCE MANAGEMENT - THE APPROACH**

Consideration was given to a presentation by the Planning and Performance Manager, which outlined the out-turn performance data for 2008/09, the baseline for Cheshire East and the inherited areas for improvement.

The presentation was set in the context of :

- The new National Comprehensive Assessment Framework
- The introduction of a new national Indicator set in 2008-09
- A national Place Survey carried out in September – November 2008
- LGR data being re-aligned to new organisation boundaries.

It was noted that there were 38 National Indicators, which fell within the remit of the Committee, 16 of which had been identified as priority indicators for the Local Area Agreement.

The new CAA regime provided areas with a scored assessment and would also highlight red flag (for areas of concern) and green flag (for areas of exemplary performance).

The Audit Commission had applied a framework for the delivery of CAA and its initial analysis of how the Council and partners understood and addressed local communities and their needs and had produced an “emerging thoughts” document.

The audit commission had consequently identified some ‘red tags’ which may become red flags for final assessment in the following areas :

- Waste
- Planning Performance
- Affordable Housing
- Environment (Climate Change)
- Employment

### RESOLVED

That a report on the Mid Point Performance Review, including further information on the improvement areas be brought to the next meeting of the Committee.

## 28 LOCAL DEVELOPMENT FRAMEWORK

Consideration was given to a presentation by the Head of Planning and Policy on the Local Development Framework (LDF) process.

The LDF system introduced a spatial planning approach, which provided the basis for guiding future development within the Borough. Unlike the former Structure Plan/Local Plan system, the LDF process involved all stakeholders at all stages of the process. The LDF consisted of a folder of planning documents, which would provide a single source for all the Council’s planning policies.

The folder contained the following documents:

- Local Development Scheme
- Statement of Community Involvement
- Annual Monitoring Report
- Core Strategy
- Site Allocations Development Plan Document (DPD)
- Area Action Plans
- Proposals Map
- Supplementary Planning Documents

To date the Council had achieved the progress in the following areas:

- Local Development Scheme had been adopted Feb 2009, comprising the Core Strategy, Site Allocations DPD (from 2010), Area Action Plans for Congleton Town Centre and Middlewich Canal Corridor (from 2011) and various Supplementary Planning Documents
- Work was underway on the Core Strategy evidence base

- Public consultation on Alsager Town Centre SPD
- Draft Statement of Community Involvement

The draft Core Strategy timetable was as follows:

- Issues and Options consultation (jointly with Sustainable Community Strategy) – end 2009
- Consultation on Preferred Option – Spring 2010
- Publication of draft Strategy for consultation November 2010
- Independent Examination – September 2011
- Binding Report – January 2012
- Adoption – April 2012

With regard to the future plans for the BAE Site, it was noted that there would be a public consultation on the preferred strategy. However possibilities included housing, mixed use or office space.

RESOLVED

That the presentation be noted

### **29 CONSULTATION BY 4NW ON THE SUBMITTED DRAFT NORTH WEST PLAN PARTIAL REVIEW**

The Committee gave consideration to the consultation by 4NW on the draft North West Plan Partial Review. The Partial review of the Regional Spatial Strategy (RSS) was limited to three subject areas: Gypsies and Travellers, Travelling Show People and Regional Parking Standards. These policies would have direct implications for the LDF and the Council's core strategy would set out the criteria for the location of these sites, while other LDF documents would translate these requirements into land requirements, and set out how these sites would be delivered.

It was noted that, draft policy L6 proposed that the Council should make provision for a minimum of 60 additional permanent residential pitches and 10 transit pitches between 2007 and 2016. The Committee agreed that the figure for permanent residential pitches was still too high and should be in line with the Gypsy and Traveller Accommodation Assessment (GTAA) requirement of 37 to 54.

With regard to the transit pitches, it was agreed that the reasons for accepting the higher number of 10 should be included in the response to the consultation and that the response should be amended to read 'up to a maximum of 10'.

RESOLVED

That the relevant portfolio holder be recommended to submit the following response to 4NW:

- 1) That the Council objects to the Gypsy and Traveller pitch provision figures identified in draft policy L6 for Cheshire East as they exceed the figures shown in the Cheshire Gypsy & Traveller Accommodation Assessment (GTAA);
- 2) That the Council objects to the current wording in policies L6 and L7, concerning the provision of an annual 3% compound increase in overall residential pitch provision beyond

2016, as it fails to fully recognise that a review of the GTAA may result in the requirement for a different level of provision or percentage increase beyond 2016;

3) That the Council supports the Travelling Showpeople plot provision for Cheshire East identified in draft policy L7. However the provision should be for up to a maximum of 10 plots. The reasons for agreeing to this provision should also be highlighted within the response.

4) That, while broadly welcoming the proposed revisions to the regional parking standards, the Council objects to some of the content of Table 8.1.

### **30 RESIDENTS PARKING POLICY**

Consideration was given to the draft Residents Parking Policy, prior to its submission to Cabinet for adoption. Following detailed consideration of the report, Members made the following comments:

- The Policy should be updated to reflect Cheshire East Council and not Cheshire County Council.
- The cost of implementing a scheme should be funded by the residents.
- Where possible the implementation of a scheme should be cost neutral, and any profits made should be put back into the Residents Parking Scheme fund.
- Cabinet should be requested to reconsider the wording of paragraph 10.4, as the intention of the paragraph is unclear.

RESOLVED

That subject to consideration being given to the above comments, Cabinet be recommended to approve the Residents Parking Policy.

(Councillors M Hollins and C Thorley left the meeting during consideration of the above issue)

### **31 FORWARD PLAN**

The Committee gave consideration to the extracts of the forward plan, which fell within the remit of the Committee.

RESOLVED

That the extracts be noted

### **32 WORK PROGRAMME**

The Committee gave consideration to the work programme. It was agreed that a report on the Performance Management Mid Year Review and the Annual Monitoring Report (LDF) would be considered at the meeting scheduled to be held on 25 November 2009.

RESOLVED

That the work programme be amended to include the issues highlighted above.

The meeting commenced at 10.00 am and concluded at 12.30 pm

Councillor G M Walton (Chairman)

This page is intentionally left blank



## Environment and Prosperity Scrutiny Committee

---

**Date:** 25 November 2009  
**Report of:** Head of Regeneration, Places  
**Title:** The New Sub-regional Architecture

---

### 1. Introduction

- 1.1 This report outlines the approach being adopted in developing a new sub-regional architecture for Cheshire and Warrington. It describes the process to date, the nature of the new structures being proposed and the timetable for further developments.

### 2. Background

- 2.1 The establishment of two new authorities in Cheshire on 1 April 2009 has provided the opportunity for a review of sub-regional working. Discussions between the Leaders of the two new authorities, with Warrington and Halton, took place on the most desirable form and function of new structures. Supported by Government Office for the North West (GONW) and by the North West Development Agency (NWDA), the new mechanism being put in place should provide a more effective and focused approach to decisions on issues that affect the whole sub-region.
- 2.2 The creation of the new Council coincided with a renewed focus from Government on the role of Local Government in the delivery of economic development. The Government published the Local Democracy, Economic Development and Construction Bill on 5 December 2008. The Bill is due to receive Royal Assent in November. This wide-ranging legislation promotes regional strategies and a focus on sub-regions as key drivers of the economy. There is therefore a premium on sub-regions presenting a united voice at the regional level on a range of policy issues, and developing a more formal, coordinated approach to the development and presentation of that policy.
- 2.3 Cheshire East therefore needs to play a prominent role in the region on economic development and regeneration issues in partnership with Warrington and Cheshire West and Chester.

### 3. The New Architecture

- 3.1 In summary, the new structure will allow for:
- a more effective and focused sub-regional approach
  - a more effective and targeted use of local authority financial and staffing resources
  - potential savings

- more effective sub-regional leadership, management and coordination
- more effective interaction with and scrutiny of key agencies such as NWDA, the Homes and Communities Agency, GONW, the regional and sub-regional improvement and efficiency partnerships
- more effective involvement with 4NW, the Regional Leaders Board.

3.2 The key to leading the sub-region is the establishment of a Leadership Board. This comprises:

- Leaders of Warrington, Cheshire East and Cheshire West and Chester Councils
- Leader of Halton Council as an associate member
- Chairs of the Police and Fire Authority
- The Chair of the Prosperity Commission (see below).

The Board has now met 3 times, supported by the local authority Chief Executives. A sub-regional management team has also been set up comprising the four Chief Executives together with representatives of the Police and Fire and Rescue Service. A stakeholder forum is intended to meet twice a year to act as a sounding board.

3.3 Beneath this decision-making structure, seven Commissions are being set up. The range of sub-regional groups currently operating in Cheshire and Warrington is being restructured into each of these Commissions. The membership, terms of reference and operation of each of the Commissions is to be determined by nominated lead organisations. Progress on developing each Commission is summarised below:

### **Prosperity (led by Warrington Borough Council)**

The role of this Commission is to coordinate and integrate economic development, transport and housing. The Prosperity Commission will replace the existing Cheshire and Warrington Economic Alliance which will undergo a review of its board and structure. There will be a new private sector chairman (who will attend the Leaders Board), and a new Managing Director will be appointed. Recruitment to both positions is being facilitated by external consultants. It is proposed that the Vice Chair is a local authority member from either Cheshire East or Cheshire West and Chester.

### **Improvement and Efficiency (led by Warrington Borough Council)**

This Commission will effectively be introduced by renaming the existing Cheshire and Warrington Improvement and Efficiency Partnership. A new manager has been appointed. The role is to coordinate and help to drive public sector improvement and efficiency activity through work programmes, collaborative working and shared services.

### **Learning and Skills (led by Cheshire West and Chester)**

This Commission will coordinate and integrate skills, learning and schools activity, including the 14-19 years agenda. The aim is to create a standalone partnership, and consultants have been commissioned to consider current best practice models and to propose the most appropriate way forward.

#### **Climate Change and Environment (led by Cheshire East)**

This Commission will coordinate sub-regional activity especially on climate change. Work is ongoing to establish a structure, membership and term of reference. An early task will be to scope existing activity and partnerships across the sub-region to remove duplication and better focus efforts on minimising our climate change impacts.

#### **Tourism and Culture (led by Cheshire West and Chester)**

The role of this Commission is to coordinate and lead arts, sports and the visitor economy, with Visit Cheshire and Chester working alongside the local authorities and cultural partners. Detailed terms of reference are still being developed. Consultants have been appointed to help formulate a vision and structure, and the aim is to secure a high profile Chair.

#### **Health and Wellbeing (led by Cheshire East and Fire and Rescue)**

The aim is to secure a new partnership by February 2010 which will coordinate health and wellbeing activity, including that of the primary care trusts and health providers.

#### **Community Safety and Justice (led by Halton Council and the Police)**

This Commission will coordinate community safety, emergency planning and resilience and justice matters. It will bring together several existing groups.

- 3.4 Each Commission is obviously at a different stage in its development, with some more advanced than others. However, the aim is for all of them to have had their inaugural meetings by February.

#### **4. Launch event at Tatton Park**

- 4.1 The new architecture was formally launched on 8 October at an event hosted by Cheshire East Council at Tatton Park. An invited audience received presentations on the new proposals and was able to discuss a range of issues.
- 4.2 The launch was well attended and there was agreement that the new arrangements should provide leadership and achieve more streamlined working across the sub-region.

#### **For discussion**

**Members are asked to consider and support the approach being adopted in setting up the new sub-regional architecture.**

This page is intentionally left blank

## ENVIRONMENT AND PROSPERITY SCRUTINY COMMITTEE

---

**Date of meeting:** 25 November 2009  
**Report of:** Head of Regeneration, Places  
**Title:** Preparing an Economic Development Strategy for Cheshire East

---

### **1. Introduction**

- 1.1 At its meeting on 11 July Cabinet considered a report on economic development priorities and partnership arrangements. The report suggested that a comprehensive Economic Development Strategy would be developed during 2010 and that a detailed timetable and project plan was in preparation. This report expands on the proposals set out in that report.

### **2. Cheshire East – the current position**

- 2.1 As a new unitary authority and the third largest within the Northwest, Cheshire East must demonstrate a strong commitment to economic development and regeneration in the context of developing our understanding of our economy and current and future challenges. We therefore need to take any opportunities to ensure our priorities influence sub-regional, regional and national policy developments, especially since there is a renewed focus by Government on the role of Local Government in the delivery of economic development.
- 2.2 The Local Democracy, Economic Development and Construction Bill is due to receive Royal Assent by the end of November. It includes a new statutory duty from April 2010, which strengthens the role of local authorities in promoting and delivering economic development and in assessing local economic conditions. There is therefore a new statutory emphasis on economic development and strategy, and an explicit requirement for Cheshire East Council to lead in undertaking, with partners, a Local Economic Assessment that incorporates the roles of all services in delivering sustainable economic growth. Whilst this will be led from the Economic Development team, it will necessitate input from across the authority, including learning, transport, etc.
- 2.3 Whilst developing a Cheshire East approach to the Strategy, the council will be expected to develop strong partnerships on cross-border issues to the north with Greater Manchester and within the Cheshire and Warrington sub-region. The Sub-Regional Strategy for Cheshire & Warrington (led by CWEA with partner input) is currently being revised, and it takes into account our

current priorities and plans. It is also in our interests to develop appropriate partnerships with our other neighbours in North Staffordshire, Shropshire, the High Peak area of North Derbyshire and NE Wales.

### **3. Current policy initiatives**

- 3.1 A new sub-regional architecture is being put in place to further develop our response to regional and local economic conditions. Within that new structure a Prosperity Commission has been set up to replace the current Cheshire and Warrington Economic Alliance. This will lead the sub-regional approach to the development of the new integrated Regional Strategy, RS2010.
- 3.2 In the interim, work is ongoing to develop a package of sub-regional priorities including priority areas in Cheshire East. These include Crewe and its surrounding area, and Macclesfield Town. Work is currently under way to further develop and implement solutions in these two priority areas.
- 3.3 A new vision for Crewe is under development, with the assistance of consultants SQW. Cabinet approved the approach being adopted at its meeting in July. The aim is to develop an economic masterplan that will position Crewe as a location for new investment and underpin the rationale for its inclusions as a key focus of the regional strategy. It will also map out options for the delivery of the strategic sites at Basford, resolve issues surrounding the potential of Crewe station in the light of developments in national transport policy and investment by Network Rail, and provide for new developments in Crewe town centre.
- 3.4 In Macclesfield, resources have been prioritised to review the role and plans for the town centre, alongside the Council's development partner, Wilson Bowden. In tandem with this, the future options for the South Macclesfield Development Area will be considered, ensuring a coherent approach to the assessment of demand/need for different uses, and where these are best located to deliver sustainable economic growth for the town.
- 3.5 Across the rest of the borough, there will be an increased emphasis on the role of market towns, and the role that they play in delivering sustainable growth, through a 'Sustainable Towns' approach.

### **4. The need for an Economic Development Strategy**

- 4.1 The work outlined above is currently taking place in a strategy vacuum. Cheshire East Council therefore needs an economic policy framework that informs that work, begins to address our obligations under the new duty, and also provide the support required in the development of other key strategies which are progressing on different timetables. For example:

Local Development Framework (LDF) – work is currently under way on the Core Strategy, due for submission in April 2011. Technical work on employment, housing, retailing and infrastructure is scheduled for completion in October 2010.

Sustainable Community Strategy (SCS) – the current timetable for the development of the SCS means that the new Strategy may be in place from June 2010.

Local Transport Plan (LTP) – the third round of LTP is due for completion in April 2011.

- 4.2 Furthermore, we need to develop a Strategy that takes into account the recent and emerging economic challenges faced by the Borough. Whilst some indicators provide comfort to how the local economy is progressing, there are others that indicate that other priorities are emerging, that require stronger collaborative approaches within the Council and with external partners and other stakeholders. These will be identified in the draft and final Economic Development Strategy, but will be articulated more clearly through the development of an Action Plan that will underpin the delivery of the strategy.

## **5. Process and Timetable**

- 5.1 Developing a full Economic Development Strategy based on the economic priorities and issues for the area evidenced through a Local Economic Assessment, will take about 18 months. The process and contents of an EDS is summarised in Annex 1. But since there is a clear need for a strategy now, it is intended to develop an early draft by April 2010, which will evolve into a full strategy.

- 5.1 The aims of the draft strategy will be to:

- set out our understanding of the current state of the economy of Cheshire East, and identify in particular its strengths, weaknesses, opportunities and threats
- clearly identify economic development priorities for the borough to support and guide the LSP in the preparation of the Sustainable Community Strategy
- support the development of the Transport Strategy and the LDF Core Strategy
- provide the wider economic context for the development/implementation of the Visitor Economy Strategy.

- 5.2 In order to develop a draft strategy by April 2010, the broad key milestones are:

|               |  |
|---------------|--|
| 20 November   | A presentation on key priorities and the current state of the economy to the LSP Economy and Skill Thematic Partnership.         |
| 25 November   | Environment and Prosperity Scrutiny Committee receives the same presentation informed by the advice of the thematic partnership. |
| February 2010 | Emerging priorities from the LSP Economy and Skills Thematic Partnership informs revision to draft framework.                    |

Environment and Prosperity Scrutiny Committee receives a progress report and early draft.

March

Draft Strategy assembled and tested against LSP priorities.  
Consultation with LAPs to test strategic policies against local circumstances.

April

Draft published for consultation and to inform SCS.

**Recommended:**

**That the Committee endorsed the approach outlined above on the preparation of a draft Economic Development Strategy for Cheshire East.**



## **Annex 1: Developing a full Economic Development Strategy**

The recommended approach is to establish a framework for making key decisions with partners on economic priorities and on interventions. This would involve engagement with partners and the public to:

- carry out an economic assessment
- establish a vision based on that assessment
- identify realistic and justifiable strategic choices and examine them
- make decisions on priorities and actions and explain them.

In the longer term, there will be a need for a completely new strategy underpinned by a new economic assessment. This would be prepared in parallel with the Regional Strategy and inform and be informed by it.

### **The components of an Economic Development Strategy**

As a minimum an EDS would need to contain:

A review of the strategic context – including the state of the global and national economy; major investments; growth points; relevant national policies such as the SNR and the Regeneration Framework; regional and sub-regional strategies; housing market assessments, transport strategies; the SCS, LDF etc.

A Local Economic Assessment – (prepared under the guidance issued as part of the preparation of the LDEDC bill and consistent with a regional framework

An agreed vision for the area and clear objectives – developed from a shared understanding of local circumstances and the economy, reflecting history, politics and geography. Wide engagement of public and partners is essential, and sometimes involves scenario planning to examine a range of possible outcomes. A SWOT analysis may be included.

Strategy developments – “evidence-based policy recommendations” are needed to show how objectives will be delivered. The common themes (as suggested by IDeA and adopted by some), are:

- Improving business performance
- Supporting priority sectors
- Raising skills and reducing worklessness
- Maximising connectivity
- Enhancing quality of life
- Stimulating investment.

A 3-5 year Action Plan – this will provide further detail on proposed interventions, possibly linked back to LAA targets, and including information on how these will be delivered, by whom and how they will be resourced.

This page is intentionally left blank

## **CHESHIRE EAST COUNCIL**

### **ENVIRONMENT AND PROSPERITY SCRUTINY COMMITTEE**

---

**Date of meeting:** 25 November 2009  
**Report of:** Head of Regeneration, Places  
**Title:** A Visitor Economy Strategic framework for Cheshire East

---

#### **1.0 Report Summary**

- 1.1 This report provides an outline of our developing visitor economic strategy which will be shaped further with partners over the next twelve months. The paper provides a summary of the Council's emerging priorities in this area and how we will deliver a visitor economy service over the coming months.
- 1.2 The framework is prepared within a wider context, taking into account existing regional and sub-regional visitor economy strategies and the Cheshire & Warrington destination management plan. Delivery in the context of this framework will also be in partnership with business clusters, related organisations and Visit Chester and Cheshire, the sub-regional tourism board.
- 1.3 This report gives Members a framework for discussion to inform the developing strategy.

#### **3.0 Strategic framework**

- 3.1 The visitor economy is an important contributor to businesses and communities in Cheshire East, generating over £600m per annum to the local economy. It contributes to improving our image, quality of life and is also a factor in why businesses locate to Cheshire East and informs individual choices over where to live & work.
- 3.2 The visitor economy will feature as a significant component of the Council's strategic economic priorities however the new Council has committed to a major focus on this area and is supporting the development of a visitor economy strategy to provide the right focus.
- 3.3 The visitor economy relates to the activity of all visitors within a destination, whether tourists or not. The visitor economy generates economic and social activity for visitors and residents alike. It not only supports jobs and economic well being, but it helps to support facilities and amenities for local communities, encourages residents to stay and spend leisure time in the local area and helps to build distinctive communities, thus increasing local pride and self-confidence. It also

enhances the image of an area, demonstrating to potential investors that the area is good to locate in. It provides a source of income for the natural and built heritage, providing an economic driver for regeneration and new uses for buildings or land.

- 3.4 The visitor economy does present an opportunity for Cheshire East to facilitate further economic growth however there are also a number of threats which need to be addressed through our strategic approach. Recent econometric modelling for Cheshire East predicts a loss of 1100 jobs in the hotel and catering industry by the end of 2012.
- 3.5 There are existing tourism strategies in place for the North West and for Cheshire and Warrington. In 2004 Cheshire & Warrington unveiled its ambitious vision for the visitor economy in 2015. A revised framework document was published in 2008 that reviewed progress, revised targets and outlined the themes and approaches that can help deliver the aspirations. This is set in the context of a Northwest Tourism Strategy that focuses its strategic objectives on attracting visitors and enhancing their experience.
- 3.6 Finally, Cheshire East has a significant role in service delivery, including culture/heritage and visitor information as well as running Tatton Park, one of the region's major strategic visitor attractions.

#### **4.0 Vision for the Cheshire East Visitor Economy**

- 4.1 The overall vision for our visitor economy is to increase the economic value to Cheshire East, through increasing visitor numbers and providing an enhanced visitor experience.
- 4.2 The strategy must be flexible enough to respond to changes in the market, including recessionary impacts. A framework for summarising some of the key issues is outlined in Appendix 1. In summary they focus on the following strategic objectives
  - Improving the quality of products and services, helping to deliver increased productivity and better performance for businesses;
  - Identifying and celebrating the distinctive offers of Cheshire East and its 'sense of place'
  - Improving the skills of the workforce and the attractiveness of our sector as an employer;
  - Improving our public realm, and the built and natural environment;
  - Supporting and encouraging signature projects
  - Supporting and encouraging a programme of sustainable events

- Making it easier for visitors to plan and book their trip, and to find the information they need to make the most of their stay.
- Considering visitor needs in decision making
- Improving customer service and the visitor experience.

## **5.0 Achievements to date**

5.1 The Visitor Economy division within Cheshire East was formed on the 1<sup>st</sup> April 2009. The team will be very small and work closely with Visit Chester and Cheshire to deliver the priorities outlined in this report.

5.2 Achievements to date include:

5.2.1 Delivered extensive 'recession' focused programme of web-based marketing materials for key brands and supported town centre events from a visitor economy perspective.

5.2.2 Developed strong working relationship with Visit Cheshire and Chester – rebalancing the focus across the sub-region.

5.2.3 Gained agreement in principle for capital funding from NWDA to develop a Visitor Economy Hub for Cheshire East at Tatton Park.

5.2.4 Developed 2010 Tatton Biennial programme, including securing extensive funding in principle from a range of agencies.

5.2.5 Developed strong partnership links and established the Visitor Economy Forum for Cheshire East, linked to the Local Strategic Partnership.

5.2.6 Supported the development of proposals for £3m investment for Jodrell Bank

5.2.7 Developed an approach to 'visioning' for Tatton Park to realise further potential and increase visitor numbers.

5.2.8 Supported other initiatives/projects across Cheshire East including Macclesfield Silk Museum, Events review and development of sustainable towns.

## **6.0 Key Priorities 2009/11**

6.1 The following priorities have been identified for the period 2009-11:

6.1.1 Development of the Visitor Economy Strategy with full evidence base, clear targets and involving partner consultation by September 2010.

- 6.1.2 Establish a Visitor Economy Forum for Cheshire East linked to the Local Strategic Partnership, Economic Development, Learning and Skills sub-group.
- 6.1.3 Completion of Tatton Visioning by end March 2010 leading to product development.
- 6.1.4 Continued support for Jodrell Bank redevelopment.
- 6.1.5 Develop an events strategy at sub-regional and Cheshire East levels to maximise their potential benefits to the visitor economy.
- 6.1.6 Develop approaches to transform the experience of visitors through quality visitor information, supporting the development of customer service skills and taking an integrated approach to issues such as transport, signage, planning and licensing.
- 6.1.7 Develop a specific focus on business tourism through a clustering approach, development of bespoke products and/or focus on specific business or association markets.
- 6.1.8 Continue to develop ICT and digital developments to enhance the offer and assist communication, including a coordinated and integrated approach to 'i-visitor guide' and 'Discover...' web platforms.
- 6.1.9 Ensure that visitor economy issues and opportunities are incorporated within regeneration projects such as Crewe Vision, Middlewich town wharf and Macclesfield town centre review, within targeted regeneration around a 'sustainable towns' agenda and through effective place marketing.
- 6.1.10 'Cheshire's Gardens of Distinction' brand will be supported as our gardens are already a major visitor attraction and a high proportion are within Cheshire East.
- 6.1.11 Increase the use of thematic brands such as Cheshire's Peak District to reinforce the countryside experience and coordination with strategic developments through the Rights of Way Improvement Plan.
- 6.1.12 Promote our waterways networks as a distinctive feature of our countryside, allowing visitors to explore Cheshire East's hidden gems in a unique way.
- 6.1.13 Develop partnership working and delivery through a visitor economy forum and 'hub' offices at Tatton Park and Reaseheath.
- 6.1.14 Review the TIC model for visitor information and test new approaches

## **7.0 Partnership Approach**

- 7.1 We need to align visitor activity with economic regeneration and the quality of life of our residents in order to deliver the quality destination that is vital. It therefore requires a corporate commitment to the quality of its visitor economy offer from Cheshire East Council and working through a partnership approach that involves both public and private sector, in order to succeed.
- 7.2 Our approach will sit within the context of the NorthWest Tourism Strategy and will also influence and contribute to the further development of our sub-regional Destination Management Plan.
- 7.3 The development of the Tourism and Culture Commission at a sub-regional level will provide a further opportunity to promote the assets of Cheshire East and ensure linkages across the sub-region and with the rest of the region.
- 7.4 At a local level, the Visitor Economy forum will be the main opportunity for partnership working with key stakeholders, in addition to the ongoing relationships which will be essential to delivering all aspects of the strategy.
- 7.5 Internally within Cheshire East, the linkages with Economic Development, Health and Well-being and the Partnerships Team will continue to develop.

## **8.0 Measuring success**

- 8.1 It is essential to the success of any strategy that effective research and intelligence is available to review success and to inform future decisions. This is most effectively delivered sub-regionally, but the distinctive requirements of Cheshire East must be identified and built in to future research and monitoring plans. There also needs to be good communication between Visit Chester and Cheshire and the Local authority's own research capacity to ensure effective targeting of resources.
- 8.2 At present there are few effective measures other than STEAM data to monitor the visitor economy. Effective working will necessitate access to good market research and monitoring of key indicators. New indicators may have to be considered in order to target resources effectively.

## **9.0 Conclusion**

- 9.1 The visitor economy strategy is a strategically important component of the Council's economic development priorities. It is an important contributor to the economy of Cheshire East, contributing to local quality of life, and has a positive impact on decisions over business

location and individual choices over where to live & work. The strategic framework outlines some of the issues and priorities that the Council must consider and resource if the potential of visitor economy is to be realised.



## Appendix 1. Visitor Economy Strategic Framework: Summary of Priorities

### Create the new experience

#### Communicating the message

Incorporate tourism branding into all relevant interpretation, promotion and place marketing

Prioritise support for projects that support and reinforce key brands and themes.

Encourage businesses to celebrate their stories and adopt the relevant tourism branding.

Use web and digital media to extend the reach of brands, messages and new product offers

Develop a visitor welcome training and support programme

#### Transforming the experience

Review and develop visitor information services that match visitor needs.

Create more opportunities to spend

Exploit the potential of food, drink and local products to enhance the experience

Foster high growth, high quality businesses

Build visitor needs into decision making on public realm, access, transport, planning, town centre management and other such matters

Demonstrate commitment to taking care of a high quality environment.

### Creating the offer

#### Attracting visitors

Support a strategy to focus on specific markets making best use of geographic or thematic brands with the objective of growing visitor income

Support investment in attractions and assets, with priority development of 'jewels' and support for 'polishing' 'gems'

Develop & support key geographic / thematic brands

Identify and celebrate the distinctive visitor offer of our countryside, towns, villages harnessing potential to add value to the visitor economy

Develop and promote an events programme that supports brands/themes raises profile and quality and helps to extend the season

Focus on business tourism

Build on Cheshire East's 'sense of place'

### Working together

Work in partnership with Visit Chester and Cheshire to deliver improvements in the Visitor Economy of Cheshire East

Work with partners on advocacy, influence, insight, market growth and development and to monitor progress

Recognise the critical role of local authorities in creating quality places for residents and visitors & help to create an environment that encourages entrepreneurs and developers

Work with tourism business clusters to help make most effective use of resources and business engagement

Ensure that the delivery of the strategy is monitored and success communicated

This page is intentionally left blank

**ENVIRONMENT AND PROSPERITY SCUTINY COMMITTEE**

---

**Date of meeting:** 25<sup>th</sup> November 2009  
**Report of:** Caroline Simpson, Head of Regeneration, Places  
**Title:** Climate Change briefing

---

**1. Introduction**

- 1.1 At its meeting on 6 October, Cabinet received a report into the leadership role of Cheshire East Council on Climate Change and Sustainability. Cabinet endorsed the approach which committed senior Members and Officers to a range of actions set out in the report. In particular, Cabinet agreed that a comprehensive climate change and sustainable development strategy should be developed for Cheshire East, one of the first components of which is the production of a Carbon Management Plan. The report also set out the potential impacts on the Council of a new statutory requirement, compliance with the Carbon Reduction Commitment.
- 1.2 This report is to inform the Committee about the Council's approach to the Climate Change agenda to date.

**2. Progress since April 2009**

- 2.1 In summary, the main activities and achievements to date are as follows:
- A Climate Change Steering Group has been set up under the chairmanship of the Director, Places. With Cabinet support, and attendance by Cllr Brickhill, Cllr Menlove and Cllr Keegan, its membership is being review to ensure that all parts of the council are fully engaged
  - A draft interim Carbon Management Plan is in development to capture all climate change activities within the authority, to set baselines and targets for improvement by April 2010
  - Work is under way on the collection and management of data required to satisfy the new statutory responsibilities under the Carbon Reduction Commitment, and developing our approach to ensure compliance with the legislation.
- 2.2 The rest of this paper expands on these, summarises the main points of the Cabinet report, describes other activities under way and highlights intended next steps.

**3.1 Background**

- 3.1 There is growing scientific evidence that the world's climate is changing and that the major cause is human activity increasing the concentration of greenhouse gases in the atmosphere. These changes will directly affect Cheshire East. Climate change is now considered to be the biggest challenge faced by local government.
- 3.2 Over the next 40 years average mean temperature is likely to rise in the UK by 2 degrees Celsius (United Kingdom Climate Projections, UKCP09, June 2009). Should this occur, we will see:

**Higher temperatures** leading to a greater need for air conditioning in homes and offices, and an increase in the threat to health from heat waves similar to that experience in France a few years ago

**Wetter winters** due to an increase in precipitation, leading to severe and increasing flood risk

**Drier summers**, straining water resources, increasing the risk of fires and damaging vulnerable ecosystems

**Rising sea levels**, increasing flood risk and coastal erosion

**Increases in extreme weather events**, with storms and high winds.

#### 4. The role of the local authority

- 4.1 Cheshire East Council will be central in leading the response to the challenge of climate change in its role as an estate manager, reducing greenhouse gas emissions from our own buildings, our vehicles and operations. We also have a central role as a provider of services where climate change resilience and greenhouse gas emissions can be influenced by council services but which are not under our direct control, such as through education, housing, planning or transport policies, contracts and purchasing. We also have a role in leading the community, to persuade the residents and businesses of Cheshire East to take action to reduce their carbon emissions at home, at work, or at play, through working with our strategic partnership and local communities.
- 4.2 The Council needs a credible approach to climate change. The best way to secure this is to develop a **Carbon Management Plan (CMP)** as part of a comprehensive strategy. This will take some time to develop, but in the interim there is a credibility gap. Cheshire East Council therefore needs to put its own house in order quickly, and Cabinet agreed that a short term *interim* CMP for Cheshire East Council should be developed on a range of indicators to help establish the baseline against which a future corporate strategy and plan could be developed. This in turn will help support the development of a community based Climate Change Strategy and Action Plan under the auspices of the LSP.
- 4.3 The wider policy agenda would suggest that the imperative is for the authority to behave as sustainably as possible, and encourage others to do so. Climate change mitigation and adaptation will be a beneficial consequence of a sustainable approach to planning and development in Cheshire East. That means taking action on a range of activities including:

- Compliance with legislation
  - Sustainable purchasing of goods and services, based on whole life costs
  - Efficiency of resource use to reduce the demand for energy and water
  - Sustainable travel by staff and Members, including the use of technology to reduce the need to travel
  - Minimising the waste of energy and consumables
  - A comprehensive public awareness campaign on the benefits of sustainable living through newsletters and the website
  - Detailed monitoring of environmental performance, possibly through an externally verified management system.
- 4.4 The above is no more than a list of headlines, action on all of which may be in hand in different parts of the authority. For example, there is work ongoing to improve the energy efficiency of buildings used by the Council, which will result in early benefits for a modest capital investment. What has been missing, however, is the comprehensive overview and strategy which puts all or the above at the centre of decision-making and the delivery of services. A CMP would bring these together as part of a consistent approach to managing and reducing our carbon footprint.
- 4.5 Work is already underway in developing an interim CMP with the aim of setting a baseline and short to medium term targets. Subsequently a full and comprehensive Carbon Management Plan will be developed. This will help ensure that Cheshire East takes a strategic and comprehensive approach to climate change. It will also contribute towards improving our performance under the Comprehensive Area Agreement. That in turn suggests that climate change and its mitigation is something that requires a significant commitment by the authority in terms of its whole operation – something that should be embedded in the culture and given a clear steer and positive leadership by Members in each portfolio area from the outset. It means identifying senior lead officers on climate change and sustainability in every service and/or building, with regular progress reports to Cabinet. The Climate Change Steering Group has been set up with that purpose, and it has a leading role especially on scrutinising actions and outcomes.
- 5. The consequences of the Carbon Reduction Commitment**
- 5.1 From 1 April 2010 Cheshire East Council will have a new legal obligation – the Carbon Reduction Commitment (CRC). This is a new mandatory emissions trading scheme starting on 1<sup>st</sup> April 2010. It will apply to large public and private sector organisations including Cheshire East Borough Council. Any organisation participating in this scheme **must** monitor energy use, **report** on their equivalent carbon dioxide (CO<sub>2</sub>) **emissions** and then **purchase allowances**, sold by Government, to cover these emissions each year.
- 5.2 By 1<sup>st</sup> April 2010 the council will need to register for the scheme and be in a position to monitor all sources of emissions. After registering, the failure to disclose required information and failure to comply with the process will also result in financial penalties. As a minimum this would be a fine of £5000.

- 5.3 In April 2011, all organisations must purchase allowances to cover their total emissions for the first and second years. Allowances will only be available from Government within a limited period. For an authority the size of Cheshire East, it is estimated that the cost to purchase allowances could be up to £500,000 each year (for which budgetary provisions need to be made). This assumes average CO<sub>2</sub> emissions of around 40,000 tonnes at a cost of £12 per tonne.
- 5.4 Overall, the CRC is expected to be revenue neutral and the money is recycled between all of the participants. A proportion of the purchase costs of allowances will be returned to the authority based on its position in a league table at the end of a trading period. Each position in the performance league table will have a different bonus or penalty rate. The top placed organisation will have the highest bonus rate and the bottom organisation the maximum penalty rate. When an organisation improves more than average it will spend less each year on allowances – but receive a higher fraction of the recycling pot.
- 5.5 In addition to the financial costs to the authority of purchasing allowances, Cabinet was made aware that staffing and resources need to be allocated to the management of data collection and monitoring as well as programmes for emission reduction. There is a clear need for a project plan to mitigate the risks and to ensure appropriate links with the Medium Term Financial Strategy. Clearly, there is a relationship between the CRC and a Carbon Management Plan, since a comprehensive approach to reducing our emissions will reduce in the overall costs to the authority over time.

## **6. Other activities**

- 6.1 While the information above focuses on main areas of action, a range of other activity is currently under way on climate change . Since April this has included:
- Up to 10 invest-to-save energy projects are either planned or currently being implemented in corporate buildings at a cost of £75,000, which will realise substantial energy savings over the next 3 years.
  - A Cheshire and Warrington Sustainability Alliance event was arranged in Middlewich for Members and partners to highlight issues and progress on Education for Sustainable Development
  - An Energy Saving Week event for the public has been arranged in Nantwich
  - A commitment to 5-10% of energy savings by 2010 has been made
  - Work is underway to establish a Climate Change and Environment Commission with Warrington and Cheshire West and Chester, as part of the new sub-regional architecture
  - Invitations have been extended to all services to nominate Eco Champions who can drive sustainability and climate change activities in all Council premises
  - A Draft Delivery Plan for National Indicator 186 has been developed

- Proposals for the Council to pursue an externally verifiable Environmental Management System are under consideration
- Support is given to several low carbon communities across Cheshire East.

## **7. Next Steps**

7.1 The range of activities currently under way is significant. However, we are very much at the start of the process and still developing a wider strategic approach to Climate Change. Next steps include:

- Developing, promoting and implementing our interim Carbon Management Plan and developing a longer term CMP by April 2010
- Developing a project management approach to the Carbon Reduction Commitment and especially communicating the implications of the CRC to schools
- Recruiting and developing our network of Eco Champions through support, information and training
- Working jointly with planning and transport colleagues to ensure a consistent approach on climate change on policy development
- Engaging the public and schools through targeted communications, including web site development
- Considering the efficacy of working with a verified, external partner on Carbon Management
- Developing wider external partnerships on Climate Change and Sustainability
- Developing, promoting and implementing the NI 186 plan into a Climate Change Action Plan & Strategy (through the LSP)
- Developing an approach on Climate Change Adaptation (under NI 188) and developing an associated Local Climate Impact Profile for Cheshire East
- Developing the Sustainable Schools agenda through Education for Sustainable Development
- Help to develop Sustainable Procurement and Construction strategies
- Develop and Implement an Environmental Management System for Cheshire East Council.

### **For Discussion:**

**The Committee is asked to endorse the approach being adopted in developing the approach of Cheshire East Council to the Climate Change agenda.**

*Officer: Rob Elliott, Economic and Regional Policy Manager*  
*Tel No: 01244 977296*  
*Email: [robert.elliott@cheshireeast.gov.uk](mailto:robert.elliott@cheshireeast.gov.uk)*

This page is intentionally left blank



## CHESHIRE EAST COUNCIL

REPORT TO: Environment and Prosperity Scrutiny Committee

---

**Date of Meeting:** 25th November 2009  
**Report of:** John Knight, Head of Planning and Policy  
**Subject/Title:** Cheshire Replacement Waste Local Plan – Saved Policies

---

**1.0 Report Summary**

- 1.1** All policies contained within local plans were saved for a period of three years following their adoption by virtue of the Planning and Compulsory Purchase Act 2004. The Cheshire Replacement Waste Local Plan (CRWLP) was adopted on July 12<sup>th</sup> 2007, and as such its policies were saved until July 11<sup>th</sup> 2010. This report sets out the Local Planning Authority's recommendations for saving the policies of the CRWLP beyond July 2010 thereby preventing a policy void and seeks Members approval of the proposed submission to the Secretary of State to request that the policies of the Plan are saved beyond the original 3 year period, until such time as they are replaced by future policy and Development Plan Documents, (Appendix 2, saved policy work). In preparing this document, officers have had regard to the Protocol Guidance issued by the Department for Communities and Local Government, which explains the criteria by which the Government will assess extension requests and to the content of PPS 12. This is the same technical and procedural exercise that has been undertaken to date on the constituent Borough Local Plan policies (Appendix ,1 process details).

**2.0 Recommendations****2.1 That**

- 1** That the Environment and Prosperity Scrutiny Committee endorses the recommendation to save all the policies of the Cheshire Replacement Waste Local Plan;
- 2** That the Environment and Prosperity Scrutiny Committee recommends to the Portfolio Holder for Performance and Capacity to agree the submission of a request to "save" the policies of the Cheshire Replacement Waste Local Plan beyond July 2010 to the Secretary of State, and that the basis for the submission is as Appendix 2
- 3** That due to the geographic nature of the document spanning two Authorities that the submission is a joint submission to the Secretary of State from Cheshire East and Cheshire West and Chester.
- 4** That an urgent review of waste site allocations for Cheshire East be undertaken in 2010 and that a report setting out how such a review might be undertaken including timescales, resources and options be presented to the next meeting of the LDF Task Group.

**3.0 Reasons for Recommendations**

- 3.1** To comply with planning policy guidance and protocols to extend the

saved policy period for the policies of the Cheshire Replacement Waste Local Plan and to ensure policy base in order to determine planning applications and to ensure support for the Authorities corporate objective of Environmental Sustainability.

- 3.2 Background to recommendation, Council meetings - The Local Development Framework Task Group met to consider this report on the 19 October 2009. The decision was deferred to ensure that Councillor representation from the Crewe area could be obtained. A further meeting of the Task Group was held on 16<sup>th</sup> November 2009. It agreed the four recommendations as set out in Paragraph 2.1 above. A similar report to this was considered by Cheshire West and Chester Councils Local Development Framework Panel on the 19 October, the draft recommendation is identified below. A report is now to be considered by their Executive and Council in December.

- (1) subject to Cheshire West and Chester Council and Cheshire East Council being in agreement that no changes are to be made to the saved policies of the Cheshire Replacement Waste Local Plan, Council be recommended to endorse the submission entitled 'Assessment of the Cheshire Replacement Waste Local Plan 2007 saved policies against the requirements of 'PPS12 – Local Development Frameworks' & DCLG Protocol'.
- (2) in the event that Cheshire East Council decides to make changes to the saved policies of the Cheshire Replacement Waste Local Plan, then the Local Development Framework Panel be given the opportunity to review its recommendation.

#### **4.0 Wards Affected**

- 4.1 The Cheshire Replacement Waste Local Plan geographically covers all wards within the Borough.

#### **5.0 Local Ward Members**

- 5.1 All members.

#### **6.0 Policy Implications including**

- 6.1 The CRWLP provides planning policies for waste management and for determining applications for the development of waste treatment and disposal facilities within the former County area of Cheshire, including Cheshire East. The Plans overall aim is to provide a land use policy framework for sustainable waste management, having regard to the waste hierarchy. Achieving the sustainable management of waste resources includes increasing recycling and composting; reducing the amount of waste sent to landfill and reducing waste growth. It is acknowledged that this issue is closely linked to responding to the challenge of climate change which includes supporting the increased use of alternative fuels supplies and renewable energy and reducing the amount of waste we produce and improve re-use and recycling.

- 6.2 Cheshire East's Interim Sustainable Community Strategy identifies the current priorities and targets of the Sustainable Community Strategies for the former authorities who now make up Cheshire East. This list includes achieving sustainable management of waste resources and responding to the challenge of climate change. The CRWLP is considered to support the key priorities of the Interim Sustainable Community Strategies and complements and fits within the framework of these strategies.
- 6.3 The policies within the Plan provide the basis for assessing any planning application and look to ensure the evaluation of the development and its likely impacts and the measures to manage these. Aspects to be considered include human health, dust, litter and fly tipping; noise; and air pollution.

## **7.0 Financial Implications for Transition Costs**

- 7.1 None

## **8.0 Financial Implications 2009/10 and beyond**

- 8.1 None

## **9.0 Legal Implications**

- 9.1 The Cheshire Replacement Waste Local Plan currently meets the Authority's requirement to produce detailed policies in respect of suitable sites or installations for waste management purposes under the Waste Management Licensing Regulations 1994 and to have regard to the waste hierarchy as part of the plan making process under the Environmental Permitting Regulations 2007. The plan therefore is considered to meet the authority's contribution to implementing the EU Waste Framework Directive. The management and delivery of waste management is a high priority for the Government and the Government Office for the North West has advised that one of the key areas that the Secretary of State will have particular regard to in making any direction for saved policies will be policies for waste management, including unimplemented site allocations.
- 9.2 Cheshire East have a statutory requirement to have planning policy in place for waste management in the form of a waste management plan.
- 9.3 The Cheshire Replacement Waste Local Plan was adopted under the transitional arrangements for the preparation of planning policy associated with the Planning and Compulsory Purchase Act 2004. Once adopted these policies were automatically saved for three years from the date of adoption. This applied to the Cheshire Replacement Waste Local Plan, which was automatically saved for three years from its adoption on 12<sup>th</sup> July 2007. This period comes to an end on 11<sup>th</sup> July 2010.
- 9.4 Where a Local Authority wishes to retain policies beyond the expiry of the three year period, they need to seek the Secretary of State's agreement to issue a direction in this effect. Local Planning Authorities are required to write to the Government Office six months before the expiration of the 3 year period to request such a direction and will need

to demonstrate that the policies they wish to be saved reflect the principles of the local development framework and are consistent with current national policy.

- 9.5 In preparing this document, officers have had regard to the Protocol Guidance issued by the Department for Communities and Local Government, which explains the criteria by which the Government will assess extension requests and to the content of PPS 12. This is the same technical and procedural exercise that has been undertaken to date on the constituent Borough Local Plan policies (Appendix 1 process details).

## **10.0 Risk Management**

- 10.1 The Cheshire Replacement Waste Local Plan already forms part of the Development Plan for Cheshire East and is a key planning policy document for the Authority in the determination of planning applications for waste development. The policies within the Plan provide a detailed policy base for decision making on waste management issues within the Authority area. The policies provided within the plan are specialist policies which are not replicated elsewhere.
- 10.2 If the policies of the Cheshire Replacement Waste Local Plan are not saved beyond July 2010 then there would be a planning policy void in relation to the delivery of sustainable waste management and the provision of waste management facilities in appropriate locations.
- 10.2 The Local Development Scheme for the Authority which was adopted in February 2009 identifies planning policy document production and priorities over a three year period. The Core Strategy has priority and must be prepared first followed by other Development Plan Documents. It is suggested that a Waste Development Plan document could be prepared by the Council which will be reflected in any revision to the adopted Local Development Scheme. This would replace the existing CRWLP. In the interim however it is important that a policy framework is maintained and that policy base retained.
- 10.3 A further risk relates to inconsistency in the approach to extending the saved policies of the Cheshire Replacement Waste Local Plan by Cheshire East and Cheshire West and Chester and a failure to submit a request to save the policies in the Plan. If this occurs there is a risk that the Secretary of State may intervene and issues a direction to extend the policies in the plan anyway in particular if the policies are considered necessary to delivery national planning policy. Similar reports are being prepared and presented to both Cheshire East and Cheshire West and Chester to try and reduce this risk.

## **11.0 Background and Option**

- 11.1 The Cheshire Replacement Waste Local Plan is the adopted Local Plan for Cheshire (covering both Cheshire East and Cheshire West and Chester). It deals specifically with policy for waste development. The policies of the Plan form part of the development plan for both Cheshire

East and Cheshire West and Chester. The Plan was adopted prior to Local Government Reorganisation by Cheshire County Council and it was envisaged that the Plan had a ten year life expectancy, covering the period 2007-2017, in other circumstances the Plan would have a further 7 years life.

- 11.2 Given the geographical coverage of the Plan and its current status as the adopted Development Plan for both Cheshire East and Cheshire West and Chester it is proposed that a joint submission is made to the Secretary of State via Government Office for the North West. This is to ensure that there is consistency in the approach to extending the saved period of the policies of the Cheshire Replacement Waste Local Plan and that both Authorities continue to have the same set of policies in existence. Cheshire West and Chester is considering a similar report to this.
- 11.3 The Plans policies are unique and very specific, in that they are used to determine planning applications for waste development. The plan sits alongside the other local plans that make up the development plan for the Borough of Chester East and Cheshire West and Chester. It does not repeat nation or regional policy but provides further more local guidance and information. In many cases the policy provides a level of detail that is specific to Cheshire and to waste management that cannot be provided by any other documents.
- 11.4 There are 36 policies within the Cheshire Replacement Waste Local Plan. These policies set the strategic context for waste development across Cheshire including on Sustainable Waste Management, the need for waste management facilities and the identification of preferred sites for waste management facilities. It also includes a suite of development control policies which are material considerations for waste planning applications and policies relating to specific types of waste management for example landfill / landraise, energy recovery and composting.
- 11.5 Following a policy analysis of CRWLP on waste management applications determined by the County Council and its successor Authorities, it can be shown that 33 of the policies (92%) have been used in the decision making process in the first 2 ½ years of the Plans life. Of the remaining three policies, two have not been used, both are locationally specific and have not been required to be used, but are still relevant; they relate to the Jodrell Bank safeguarding area; and underground hazardous waste storage. The third policy relates to development and waste recycling. The policy is applicable to non waste development and has been designed to be utilised in the determination of applications for general development, such as housing, retail and leisure. Prior to Local Government Reorganisation this meant all planning applications determined by District Councils. Planning Officers are aware that the policy has been used throughout the former Authorities, both in pre applications discussions and in the determination of applications. No formal data has been collected from the District Authorities. The policy provides the ability to deliver sustainable waste management through all types of development and as such is still highly relevant.

- 11.6 Further analysis of the policies against the PPS 12 criteria indicates that the policies are all still relevant and up to date and provide Cheshire, both East & West with a robust policy framework within which to make planning decisions. They are in conformity with the adopted Regional Spatial Strategy and it supports the interim Sustainable Community Strategies of the Authorities with respect to sustainable waste management and challenges relating to climate change.
- 11.7 An intrinsic part of the CRWLP is contained within the inset maps which identify "Preferred sites" for waste management facilities, both built and landfill / landraise (policies 4 and 9). These 'Preferred Sites' are considered suitable 'in principle' for the development of waste management facilities. These policies provide the geographic spread of facilities and it provides the Authorities ability to meet the requirements to produce detailed policies in respect of suitable sites or installations for waste management purposes under the Waste Management Licensing Regulations 1994. The Government Office for the North West has advised that The Secretary of State in coming to a decision on whether a direction is appropriate, will have particular regard to policies for waste management, including unimplemented site allocations. The Secretary of State considers that it is important that such policies remain part of the development plan for the local planning authority area. The powers of direction relates to saving policies and not parts of policies, that is to say all allocations associated with for example policy 4, rather than some allocations. In paragraph 10.2 it is identified that the Council will have an opportunity to replace policies through the production of development plan documents, which will require putting together the necessary evidence base to support your Councils aspirations. The CRWLP is an interim document which provides a necessary policy framework for decision making.
- 11.8 The work is required to be submitted by 11<sup>th</sup> January 2010. The Secretary of State will then have 6 months to consider the submission. Failure to submit could leave a planning policy void for waste management although the Secretary of State could issue a direction to extend the policies without a formal request from the Local Authority if they feel it is necessary to secure the delivery of the national planning policy.

## **12.0 Overview of Year One and Term One Issues**

- 12.1 The document forms part of the statutory development plan, and will provide guidance for the development of waste management facilities within the Borough, until such time as the document and its policies are replaced.

## **13.0 Access to Information**

The background papers relating to this report can be inspected at Westfields, Sandbach and by contacting the report writer:

Name: Anne Mosquera

Designation: Minerals and Waste Spatial Planning Manager

Tel No: 01244 973802

Email: [anne.mosquera@cheshirewestandchester.gov.uk](mailto:anne.mosquera@cheshirewestandchester.gov.uk)

## Appendix 1

### **Procedure for reviewing and agreeing extension to saved local plan policies. (Taken from PPS 12 and DCLG protocol (August 2006))**

The Government will take the following issues into account in considering extensions to local plan and UDP saved policies.

PPS12 paragraph 5.15 says that policies to be extended should comply with the following criteria:

- (i) Where appropriate, there is a clear central strategy;
- (ii) Policies have regard to the Community Strategy for the area;
- (iii) Policies are in general conformity with the regional spatial strategy or spatial development strategy;
- (iv) Policies are in conformity with the core strategy development plan document (where the core strategy has been adopted);
- (v) There are effective policies for any parts of the authority's area where significant change in the use or development of land or conservation of the area is envisaged; and
- (vi) Policies are necessary and do not merely repeat national or regional policy.

In addition, the Government will also have particular regard to:

- Policies that support the delivery of housing, including unimplemented site allocations, up to date affordable housing policies, policies relating to the infrastructure necessary to support housing;
- Policies on Green Belt general extent in structure plans and detailed boundaries in local plans/UDPs;
- Policies that support economic development and regeneration, including policies for retailing and town centres;
- Policies for waste management, including unimplemented site allocations;
- Policies that promote renewable energy; reduce impact on climate change; and safeguard water resources

## **Appendix 2**

**Cheshire West and Chester Council**

**Cheshire East Council**

**Assessment of the Cheshire  
Replacement Waste Local Plan 2007  
saved policies against the requirements  
of 'PPS12 – Local Development  
Frameworks' & DCLG August 2006  
Protocol**



## Introduction

1. This document has been written in accordance with the requirements of Planning Policy Statement 12: Local Spatial Planning and the Department for Communities and Local Government Protocol 2006 for saving adopted Local Plan policies beyond the 3 year saved period.
2. Under the provisions of the Planning and Compulsory Purchase Act 2004 the policies of the Cheshire Replacement Waste Local Plan 2007 (CRWLP) were saved for a period of three years from the date of adoption on 12th July 2007 to 11<sup>th</sup> July 2010.
3. The CRWLP covers the former administrative area of Cheshire County Council and following Local Government Reorganisation in April 2009 is part of the development plan for both the Borough of Cheshire West and Chester and the Borough of Cheshire East.
4. Neither of the two Boroughs have any plans to replace the CRWLP within their current adopted Local Development Schemes. It will therefore be imperative to save CRWLP policy beyond the initial three year period, i.e. beyond July 2010, until such time as it is replaced by future policy.
5. This report is a request by both Cheshire West and Chester and Cheshire East to extend the policies of the CRWLP beyond July 2010. It has been prepared on behalf of both Cheshire West and Chester and Cheshire East. Both Authorities have considered the issues of saved policies through their respective Councils. Both support the recommendation that all policies of the plan be saved.

## Background

6. PPS12 states in the circumstances where local authorities wish to continue with the saved policies beyond the three year period (i.e. for the CRWLP beyond July 2010) they should demonstrate to the Secretary of State that these policies reflect the principles of Local Development Frameworks and are consistent with current national policy.
7. PPS12 states in paragraph 9.2 of PPS12 that the following issues will be taken into account in considering extensions to Local Plan policies:
  - where appropriate, there is a clear central strategy;
  - policies have regard to any sustainable community strategy for the area;
  - policies are in general conformity with the regional spatial strategy or spatial development strategy;
  - policies are in conformity with the core strategy development plan document (where the core strategy has been adopted);
  - there are effective policies for any parts of the authority's area where significant change in the use of development of land or conservation of the area is envisaged; and

- policies are necessary and do not repeat national or regional policy.
8. In addition it states that the Government will have particular regard to:
- policies that support the delivery of housing, including unimplemented site allocations, up-to-date affordable housing policies and policies relating to the infrastructure necessary to support housing;
  - policies on Green Belt general extent in structure plans and detailed boundaries in local plans or unitary development plans;
  - policies that support economic development and regeneration, including
  - policies for retailing and town centres;
  - policies for waste management, including unimplemented site allocations; and
  - policies that promote renewable energy, reduce impact on climate change or safeguard water resources.
9. This report includes an assessment of the policies of the CRWLP against the criteria outlined above. Appendix 2 includes a table which lists those policies that Cheshire West and Chester and Cheshire East wish to save beyond the original 3 year period, and provides the reasoned justification for this.

### **Assessment Criteria**

10. The following comments provide an explanation of how the policies have been assessed against the Government's criteria.

#### **Criteria I : Where appropriate, there is a clear, central strategy**

11. The CRWLP 2007 contains a clear strategy with the overall aim:

**'To provide a land use planning policy framework for sustainable waste management in Cheshire, having regard to the waste hierarchy, the management and disposal of waste at the nearest appropriate facility, regional self sufficiency and the guiding principles of sustainable development'.**

12. The strategy of the CRWLP is an integral part of the development plan for the Borough's of Cheshire West and Chester and Cheshire East. The policies are unique in that they are used to determine planning applications for waste development and identify sites which are considered 'in principle' suitable for a waste management use. The plan sits alongside the other Local Plans that make up the development plan for the Boroughs of Cheshire West and Chester and Cheshire East.
13. The strategy of the CRWLP is an important part of the central strategy for the Borough's of Cheshire West and Chester and

Cheshire East. It supports the priorities of the following key strategies of these authorities:

- Cheshire West and Chester Corporate Plan 2009-2011: Making It Happen and associated Directorate Plans
- Cheshire East Corporate Plan 2009-2010: Improving Services Together
- An Interim Sustainable Community Strategy for Cheshire West and Chester, November 2008 (see criteria ii below)
- Consolidated (Interim) Sustainable Community Strategy for Cheshire East, August 2008 (see criteria ii below)
- The Cheshire Consolidated Joint Municipal Waste Management Strategy 2007 to 2020.

14. At the higher level the strategy of the CRWLP is also in accordance with and supports the policies and overall strategy of the North West Plan: Regional Spatial Strategy to 2021. This is discussed in more detail under criteria iii below. It is also in accordance with the overall objective of Planning Policy Statement 10 which is to protect human health and the environment by producing less waste and using it as a resource wherever possible. The CRWLP is also considered to contribute to meeting the requirements of Articles 4, 16 and 28 of Waste Framework Directive 2008/98/EC<sup>1</sup>.

**Criteria II : Policies have regard to the Community Strategy for the area**

15. Following Local Government Reorganisation both Cheshire West and Chester and Cheshire East have in place interim Sustainable Community Strategies. These bring together the key priorities of the Community Strategies of the former Districts in their area and the former County Council's Community Strategy. Preparation of new Sustainable Community Strategies for both Borough's is currently underway. The CRWLP 2007 has been assessed against both interim Sustainable Community Strategy's.

16. Cheshire West and Chester's Interim Sustainable Community Strategy identifies the themes of Environmental Quality; Natural Resources; Landscape and Biodiversity and Built Environment and Heritage as four of the interim priorities and aspirations for the area. Also of importance are the priority themes contained in the Cheshire Local Area Agreement which includes among others achieving sustainable management of waste resources and responding to the challenge of climate change.

17. Cheshire East's Interim Sustainable Community Strategy identifies the current priorities and targets of the Sustainable Community Strategies for the former authorities who now make up Cheshire East. This list includes achieving sustainable management of waste resources and responding to the challenge

---

<sup>1</sup> Previously Articles 3(1) and 7 of EU Waste Directive Framework 2006/12/EC

of climate change. As regards achieving the sustainable management of waste resources the priorities for action identified include increasing recycling and composting; reducing the amount of waste sent to landfill and reducing waste growth. It is acknowledged that this issue is closely linked to responding to the challenge of climate change which includes the priority actions of supporting the increased use of alternative fuels supplies and renewable energy and reducing the amount of waste we produce and improve re-use and recycling.

18. The CRWLP is considered to support the key priorities of the Interim Sustainable Community Strategies and complements and fits within the framework of these strategies.

**Criteria III : The policies are in general conformity with Regional Spatial Strategy**

19. The policies of the CRWLP 2007 have been assessed against the requirements of the adopted Regional Spatial Strategy (RSS) – the North West Plan – Regional Spatial Strategy to 2021. All policies within the CRWLP are considered to be in conformity with the RSS.
20. An assessment was carried out of each of the CRWLP policies against each of the RSS Policies. In particular the CRWLP policies supports the following policies in the RSS: DP1; DP2; DP4; DP5; DP7; DP9; RT4; RT5; RT6; EM1; EM5; EM9; EM10; EM11; EM12 and EM13; EM15 and EM17.

**Criteria IV: The policies are in conformity with Core Strategy (DPD) where adopted**

21. No Core Strategy (DPD) within either Cheshire West and Chester or Cheshire East's Local Development Frameworks has been adopted; therefore this test is not applicable.

**Criteria V: There are effective policies for any part of the authority's area where significant change in the use or development of land or conservation of the area is envisaged**

22. The CRWLP 2007 provides policies which can influence areas where significant change is envisaged. This includes providing a network of Waste Management Sites and the development of new types of waste management facility such as Anaerobic Digestion, Mechanical Biological Treatment and Energy from Waste plants to deliver sustainable waste management. These will include private facilities and those developed by or on behalf of the Unitary Authorities to meet their responsibilities for managing municipal waste.
23. The CRWLP supports the Cheshire Consolidated Joint Municipal Waste Strategy and the Cheshire Waste Private Finance Initiative

(PFI). The Waste PFI will deliver new facilities for the management of Cheshire's household waste and is being carried forward in partnership by Cheshire West and Chester and Cheshire East following Local Government Reorganisation.

24. The policies are required to determine forthcoming planning applications for all new waste development. There are major changes and pressures taking place within waste management, the industry, collection and reuse of waste and technologies utilised, which can result in significant change in the use of land and/or proposals which adopt new types of technology which require specific planning policy considerations. The existing policies in the CRWLP play a vital part in ensuring that any proposals contribute to the overall objective of sustainable waste management. It also ensures that the impacts of the development proposals are robustly tested to ensure that they would result in a minimal adverse environment, social and economic impacts.
25. The retention of the existing policy framework is considered essential to secure the proper planning of the areas until such time as it is replaced by future Development Plan Documents.

**Criteria VI: The policies are necessary and do not merely repeat national or regional policy**

26. The policies of the CRWLP 2007 have been assessed not only for their compliance with national and regional policy, but also to determine whether they provide further guidance and information that is not given by national and regional policy. In many cases the policies of the Waste Local Plan provide a level of detail that is specific to Cheshire and to waste management that is not provided for by any other documents.
27. This includes the site allocations which identify potential future areas for waste development within Cheshire, and policies relating to Jodrell Bank, Areas of Special County Value etc. The generic policies within the CRWLP 2007 are more detailed than those found in regional and national guidance, and provide criteria for assessing applications. This level of detail within a policy is necessary as it ensures that decision making is robust.
28. An initial analysis of policy use through the development control system either through reports to committee and/or noted on decision notices and appeal/Secretary of State decisions has revealed that 33 policies out of the 36 (92%) have been used throughout the Plan's life so far to end August 2009. The policies that have been used are shown at appendix 1.
29. The figure however does not truly reflect policy implementation. Two of the policies in the CRWLP have not been used as no applications have been received to which they would apply. The policies are either locationally specific e.g. Policy 21: Jodrell

Bank only applies to applications received within the Jodrell Bank Zone or waste specific as in Policy 35 which relates to underground hazardous waste storage/containment. Although these policies have not been used thus far they are still relevant as applications may be received in the future to which these policies apply and they are locally distinctive to circumstances that may arise in Cheshire.

30. Some policies are also applicable to non waste development including Policy 10: Minimising Waste During Construction and Development and Policy 11: Development and Waste Recycling. These are designed to be used in the determination of applications for general development. Prior to Local Government Reorganisation this included those applications determined by District Councils. It is considered beyond the scope of this exercise to review all applications determined by the District and new Unitary Authority to which policies 10 and 11 applied in order to assess its usage. Policy 10 has conclusive evidence of use. However, with policy 11, waste planning officers are aware that the policy has been used in determining planning applications for non waste development. The value of both of these policies is that they widen the objective of delivering sustainable waste management through all types of development. Therefore they are still relevant policies.

## **Conclusion**

31. In Conclusion, all the policies that both Cheshire West and Chester and Cheshire East are requesting to be saved are in compliance with the criteria set out within the Secretary of State's protocol, in that the policies

- Are considered to provide a clear central strategy for the management of waste within Cheshire West and Chester and Cheshire East;
- They have regard to the emerging Sustainable Community Strategies for the Boroughs and help in implementing their sustainable waste management and climate change agendas;
- Provide effective and robust policies for those areas of the Borough where significant change is anticipated and the policies provide for a level of detail that is specific to Cheshire and to waste management that is not provided for by any other documents.
- They do not therefore merely repeat national or regional policy;
- They clearly relate to infrastructure necessary to support housing;
- They provide waste management guidance and site allocations;
- And they promote renewable energy; reduce the impact on climate change and safeguard water resources.

## **32. The Councils therefore request that the Secretary of State:**

- **Save the policies identified in Appendix B beyond the original three year period.**

## Appendix 2A

List of Cheshire Replacement Waste Local Plan 2007 policies that have been used for development control purposes

| Policy No | Policy title   | Used ✓<br>Not used ✗ | Policy No | Policy title   | Used ✓<br>Not used ✗ |
|-----------|--|----------------------|-----------|--|----------------------|
| 1         | Sustainable Waste Management                                   | ✓                    | 19        | Agricultural land quality  | ✓                    |
| 2         | The need for waste management facilities                       | ✓                    | 20        | Public Rights of Way   | ✓                    |
| 3         | Phasing of sites for landfill/landraise or thermal treatment   | ✓                    | 21        | Jodrell Bank   | ✗                    |
| 4         | Preferred sites for waste management                           | ✓                    | 22        | Aircraft Safety  | ✓                    |
| 5         | Other sites for waste management facilities                    | ✓                    | 23        | Noise  | ✓                    |
| 6         | Built waste management facilities of a regional/national scale | ✓                    | 24        | Air Pollution: Air emissions including dust  | ✓                    |
| 7         | Sites for open windrow composting facilities                   | ✓                    | 25        | Litter   | ✓                    |
| 8         | Wastewater treatment works                                     | ✓                    | 26        | Air Pollution: Odour   | ✓                    |
| 9         | Preferred sites for non-hazardous landfill                     | ✓                    | 27        | Sustainable Transportation of waste and waste derived materials                        | ✓                    |
| 10        | Minimising waste during construction and development           | ✓                    | 28        | Highways   | ✓                    |
| 11        | Development and waste recycling                                | ✗                    | 29        | Hours of Operation   | ✓                    |
| 12        | Impact of development proposals                                | ✓                    | 30        | Hours of Operation for Household Waste Recycling Centres                               | ✓                    |
| 13        | Areas of Special County Value                                  | ✓                    | 31        | Ancillary development at a Landfill/Landraise site and/or open windrow composting site | ✓                    |
| 14        | Landscape  | ✓                    | 32        | Reclamation  | ✓                    |
| 15        | Green Belt   | ✓                    | 33        | Liaison Committees   | ✓                    |
| 16        | Historic Environment   | ✓                    | 34        | Energy Recovery  | ✓                    |
| 17        | Natural Environment  | ✓                    | 35        | Underground hazardous Waste Storage/Containment  | ✗                    |
| 18        | Water resource, protection and flood risk                      | ✓                    | 36        | Design   | ✓                    |





## Appendix 2B

Policies Requested to be Saved

| Policy |   | Government Criteria:                                   |  |   |   |   |  | Government will have regard to:         |   |   |  |  | Comment/Justification   | Recommendation |
|--------|---|--|--|---|---|---|--|---|---|---|--|--|---|----------------|
|        |   | i: where appropriate there is a clear central strategy | li: regard to Sustainable Community Strategy | lii: Policy is in general conformity with RSS | iv: Policy is in conformity with core strategy DPD (if adopted) | v: Policy for areas where significant change in the use or development of land or conservation of the area is envisaged | vi: policies are necessary and do not repeat national policy | Policy supports the delivery of housing | Policies on Green Belt general extent and detailed boundaries | Policies that support economic development and regeneration | Policies for Waste management including unimplemented site allocations | Policies that promote renewable energy, reduce impact on climate change or safeguard water resources |   |                |
| 1      | <b>Sustainable Waste Management</b>             | ✓  | ✓  | ✓   | N/A   | ✓   | ✓  | N/A                                     | N/A   | N/A   | ✓  | ✓  | This policy provides the overarching framework for the delivery of sustainable waste management at the local level to support regional and national policy.   | Save           |
| 2      | <b>The need for waste management facilities</b> | ✓  | ✓  | ✓   | N/A   | ✓   | ✓  | N/A                                     | N/A   | N/A   | ✓  | N/A  | This policy seeks to balance need to provide a range of waste management facilities to meet waste generated whilst balancing the environmental impacts of these facilities. It is an important policy for development control purposes to ensure sustainable waste management is delivered. | Save           |

|   |  |   |   |   |     |   |   |     |     |     |   |     |   |      |
|---|--|---|---|---|-----|---|---|-----|-----|-----|---|-----|---|------|
| 3 | Phasing of sites for landfill/landraise or thermal treatment | ✓ | ✓ | ✓ | N/A | ✓ | ✓ | N/A | N/A | N/A | ✓ | N/A | This policy ensures there is the sufficient and timely provision of landfill/landraise and thermal treatment capacity to meet the needs of Cheshire. In particular for landfill/landraise it is a means to ensure that there is not oversupply of landfill/landraise void space which could be a disincentive to the development of new waste management facilities to support the waste hierarchy and to reduce the reliance on landfill.  | Save |
| 4 | Preferred sites for waste management                         | ✓ | ✓ | ✓ | N/A | ✓ | ✓ | N/A | N/A | N/A | ✓ | ✓   | This policy and 23 inset maps of the CRWLP identify the preferred sites for built waste management in Cheshire. The policy provides the spatial guidance for new developments. The policy provides the public and the waste management industry with sites where waste management uses would be acceptable. It is a crucial policy in ensuring Cheshire has flexibility and choice of future sites for waste management. It provides the Authorities ability to meet the requirements to produce detailed policies in respect of suitable sites or installations for waste management purposes under the Waste Management Licensing Regulations 1994 and to have regard to the waste hierarchy as part of the plan making process under the | Save |

|   |   |   |   |   |     |   |   |     |     |     |   |     |  |      |
|---|---|---|---|---|-----|---|---|-----|-----|-----|---|-----|--|------|
|   |   |   |   |   |     |   |   |     |     |     |   |     | Environmental Permitting Regulations 2007; authority's contribution to implementing the EU Waste Framework Directive; meeting the interim Sustainable Community Strategy. While some of the allocations have been granted permission, not all have been developed and there remains the ability for future alterations and revisions to be requested. The policy and its accompanying inset plans are crucial in providing the framework for decision making for future waste management facilities. |      |
| 5 | Other sites for waste management facilities                     | ✓ | ✓ | ✓ | N/A | ✓ | ✓ | N/A | N/A | N/A | ✓ | N/A | This is a criteria based policy which provides the basis for considering development proposals for a waste management facility not on a site identified as a preferred area under policy 4. Whilst it is considered the preferred sites provide an adequate choice of sites policy 5 is important to provide flexibility to respond to legislative and technological changes and to provide choice if the preferred sites are unsuitable, unavailable or less acceptable.                            | Save |
| 6 | Built waste management facilities of a regional/ national scale | ✓ | ✓ | ✓ | N/A | ✓ | ✓ | N/A | N/A | N/A | ✓ | N/A | The strategy of CRWLP is to provide adequate sites to meet the waste management needs of Cheshire. However, this does preclude applications being made for facilities that are of a national/regional scale. Policy 6 provides that basis against  | Save |

|   |  |   |   |   |     |   |   |     |     |     |   |     |  |      |
|---|--|---|---|---|-----|---|---|-----|-----|-----|---|-----|--|------|
|   |  |   |   |   |     |   |   |     |     |     |   |     | which such proposals will be considered. The policy supports policies EM10; EM12 and EM13 of the North West of England Plan (Regional Spatial Strategy to 2021).   |      |
| 7 | Sites for open windrow composting facilities | ✓ | ✓ | ✓ | N/A | ✓ | ✓ | N/A | N/A | N/A | ✓ | N/A | This policy provides specific guidance for development control purposes in determining applications for open windrow composting sites not identified on the proposals maps. The policy is specific to open windrow composting and takes into account the unique nature of such development.  | Save |
| 8 | Wastewater treatment works                   | ✓ | ✓ | ✓ | N/A | ✓ | ✓ | N/A | N/A | N/A | ✓ | N/A | This policy provides the basis for development control officers if a proposal for a new or extended waste water treatment works is proposed. It is consistent with the indications that no new waste water treatment works are likely to be required during the plan period.   | Save |
| 9 | Preferred sites for non-hazardous landfill   | ✓ | ✓ | ✓ | N/A | ✓ | ✓ | N/A | N/A | N/A | ✓ | N/A | This policy and 3 inset maps of the CRWLP identify the preferred sites for new landfill/landraise in Cheshire. The policy provides the public and the waste management industry with sites where proposals for landfill/landraise operations would be considered acceptable. It is a crucial policy in ensuring Cheshire has flexibility and choice of future sites for waste management. Refer to commentary on policy 4, relevant to this policy also. | Save |

|    |  |   |   |   |     |   |   |     |     |     |   |     |   |      |
|----|--|---|---|---|-----|---|---|-----|-----|-----|---|-----|---|------|
| 10 | Minimising waste during construction and development | ✓ | ✓ | ✓ | N/A | ✓ | ✓ | N/A | N/A | N/A | ✓ | ✓   | This policy is applicable to proposals for significant development (not just waste development). It is an important development control policy for assisting in the delivery of the waste hierarchy and for ensuring the sustainable and prudent use of resources in new development.                           | Save |
| 11 | Development and waste recycling                      | ✓ | ✓ | ✓ | N/A | ✓ | ✓ | N/A | N/A | N/A | ✓ | ✓   | This policy is applicable to proposals for significant development (not just waste development). It is an important development control policy for assisting in the delivery of the waste hierarchy through the provision of recycling and collection of recyclable materials in the design of new development. | Save |
| 12 | Impact of development proposals                      | ✓ | ✓ | ✓ | N/A | ✓ | ✓ | N/A | N/A | N/A | ✓ | N/A | As waste management facilities have the potential to impact positively and negatively. This policy is specific to waste development, applicants are required to provide an assessment of the short, medium and long term as well cumulative impacts of the proposal and the measures to manage these.           | Save |
| 13 | Areas of Special County Value                        | ✓ | ✓ | ✓ | N/A | ✓ | ✓ | N/A | N/A | N/A | ✓ | N/A | Areas of Special County Value are identified in the former District Local Plans in Cheshire. The ASCV's are an important local interpretation of national and regional policy. This policy is important for protecting these landscape designations from unacceptable impacts.                                  | Save |

|    |   |   |   |   |     |   |   |     |     |     |   |     |   |      |
|----|---|---|---|---|-----|---|---|-----|-----|-----|---|-----|---|------|
| 14 | Landscape                                 | ✓ | ✓ | ✓ | N/A | ✓ | ✓ | N/A | N/A | N/A | ✓ | N/A | This policy provides development control guidance to ensure that there are no unacceptable impacts of proposals on the landscape of the area.   | Save |
| 15 | Green Belt                                | ✓ | ✓ | ✓ | N/A | ✓ | ✓ | N/A | ✓   | N/A | ✓ | N/A | This policy is necessary to protect the Green Belt from inappropriate development and to provide guidance on waste development in the Green Belt. It is consistent with national guidance.                        | Save |
| 16 | Historic Environment                      | ✓ | ✓ | ✓ | N/A | ✓ | ✓ | N/A | N/A | N/A | ✓ | N/A | The policy is necessary for development control purposes. It is necessary to continue to protect and enhance the historic environment.  | Save |
| 17 | Natural Environment                       | ✓ | ✓ | ✓ | N/A | ✓ | ✓ | N/A | N/A | N/A | ✓ | N/A | The policy is necessary for development control purposes. It is necessary to continue to protect and enhance the natural environment.   | Save |
| 18 | Water resource, protection and flood risk | ✓ | ✓ | ✓ | N/A | ✓ | ✓ | N/A | N/A | N/A | ✓ | ✓   | The policy is necessary for development control purposes. It protects water resources and new development against flood risk as required by PPS25 Development and Flood Risk.                                     | Save |
| 19 | Agricultural land quality                 | ✓ | ✓ | ✓ | N/A | ✓ | ✓ | N/A | N/A | N/A | ✓ | N/A | The policy is necessary for development control purposes. It protects against the loss of the best and most versatile agricultural land.  | Save |
| 20 | Public Rights of Way                      | ✓ | ✓ | ✓ | N/A | ✓ | ✓ | N/A | N/A | N/A | ✓ | N/A | The policy is necessary for development control purposes. It provides the policy for dealing with applications that may affect a public right way to ensure that there are no unacceptable impacts or net loss of | Save |

|    |   |   |   |   |     |   |   |     |     |     |   |     |   |      |
|----|---|---|---|---|-----|---|---|-----|-----|-----|---|-----|---|------|
|    |   |   |   |   |     |   |   |     |     |     |   |     | Public Rights of Way.   |      |
| 21 | Jodrell Bank                                      | ✓ | ✓ | ✓ | N/A | ✓ | ✓ | N/A | N/A | N/A | ✓ | N/A | The policy is necessary to safeguard the efficient operation of the radio telescope at Jodrell Bank in line with the Town and County Planning (Jodrell Bank Radio Telescope) Direction 1973.  | Save |
| 22 | Aircraft Safety                                   | ✓ | ✓ | ✓ | N/A | ✓ | ✓ | N/A | N/A | N/A | ✓ | N/A | The policy is necessary to protect aircraft safety. Particularly given the bird strike risk associated with some open waste management facilities such as landfill/landraise.   | Save |
| 23 | Noise   | ✓ | ✓ | ✓ | N/A | ✓ | ✓ | N/A | N/A | N/A | ✓ | N/A | The policy is necessary for development control purposes. It provides a unique policy on how to control noise emissions from waste developments. It is important for protecting the amenity of those living and working near a site.        | Save |
| 24 | Air Pollution:<br>Air emissions<br>including dust | ✓ | ✓ | ✓ | N/A | ✓ | ✓ | N/A | N/A | N/A | ✓ | N/A | The policy is necessary for development control purposes. It provides a unique policy on how to control air emissions and dust from waste developments. It is important for protecting the amenity of those living and working near a site. | Save |
| 25 | Litter  | ✓ | ✓ | ✓ | N/A | ✓ | ✓ | N/A | N/A | N/A | ✓ | N/A | The policy is necessary for development control purposes. It provides a unique policy on how to control litter from waste developments. It is important for protecting the amenity of those living and working near a site.                 | Save |

|    |  |   |   |   |     |   |   |     |     |     |   |     |   |             |
|----|--|---|---|---|-----|---|---|-----|-----|-----|---|-----|---|-------------|
| 26 | <b>Air Pollution: Odour</b>  | ✓ | ✓ | ✓ | N/A | ✓ | ✓ | N/A | N/A | N/A | ✓ | N/A | The policy is necessary for development control purposes. It provides a unique policy on how to control odour from waste developments. It is important for protecting the amenity of those living and working near a site.                                      | <b>Save</b> |
| 27 | <b>Sustainable Transportation of waste and waste derived materials</b> | ✓ | ✓ | ✓ | N/A | ✓ | ✓ | N/A | N/A | N/A | ✓ | ✓   | This policy forms part of the overall strategy of the CRWLP by encouraging waste to be transported by the most sustainable means as an alternative to road transport. This supports EM12 of the North West of England Plan (Regional Spatial Strategy to 2021). | <b>Save</b> |
| 28 | <b>Highways</b>  | ✓ | ✓ | ✓ | N/A | ✓ | ✓ | N/A | N/A | N/A | ✓ | N/A | The policy is necessary for development control purposes. It provides a unique policy on how to consider impacts on the highways network of waste developments. It is important for protecting the amenity of those living and working near a site.             | <b>Save</b> |
| 29 | <b>Hours of Operation</b>  | ✓ | ✓ | ✓ | N/A | ✓ | ✓ | N/A | N/A | N/A | ✓ | N/A | The policy is necessary for development control purposes. It sets out how the hours of operation for waste management sites should be managed and against which proposals will be assessed.   | <b>Save</b> |
| 30 | <b>Hours of Operation for Household Waste Recycling Centres</b>        | ✓ | ✓ | ✓ | N/A | ✓ | ✓ | N/A | N/A | N/A | ✓ | N/A | The policy is necessary for development control purposes. It recognises the unique requirement for the opening hours of Household Waste Recycling Centres. It sets out how the hours of operation for these   | <b>Save</b> |



|    |   |   |   |   |     |   |   |     |     |     |   |     |   |      |
|----|---|---|---|---|-----|---|---|-----|-----|-----|---|-----|---|------|
|    |   |   |   |   |     |   |   |     |     |     |   |     | sites should be managed and against which proposals will be assessed.   |      |
| 31 | Ancillary development at a Landfill/ Landraise site and/or open windrow composting site | ✓ | ✓ | ✓ | N/A | ✓ | ✓ | N/A | N/A | N/A | ✓ | N/A | The policy is necessary for development control purposes. It covers ancillary development at non built waste management sites during operation and afterwards. It specifies how ancillary development will be assessed.   | Save |
| 32 | Reclamation   | ✓ | ✓ | ✓ | N/A | ✓ | ✓ | N/A | N/A | N/A | ✓ | N/A | The policy is necessary for development control purposes. It covers both built and non permanent built waste management sites to ensure that once operations have been completed the site is reclaimed and restored to the required standard.   | Save |
| 33 | Liaison Committees  | ✓ | ✓ | ✓ | N/A | ✓ | ✓ | N/A | N/A | N/A | ✓ | N/A | This is a key development control policy which allows the planning authority to require an applicant to set up a liaison committee via planning condition. Liaison committees a useful tool to build relationships between local communities and waste management operator as a forum to discuss site operations, future proposals and local concerns regarding a site. | Save |
| 34 | Energy Recovery   | ✓ | ✓ | ✓ | N/A | ✓ | ✓ | N/A | N/A | N/A | ✓ | ✓   | This policy ensures that all proposals for thermal treatment of waste includes energy recovery and uses   | Save |

|    |  |   |   |   |     |   |   |     |     |     |   |     |  |      |
|----|--|---|---|---|-----|---|---|-----|-----|-----|---|-----|--|------|
|    |  |   |   |   |     |   |   |     |     |     |   |     | pre treated waste. This ensures that thermal capacity is consistent with the waste hierarchy and national policy. The policy also seeks the recovery of landfill gas so that this energy source is not lost.   |      |
| 35 | Underground Hazardous Waste Storage/ Containment | ✓ | ✓ | ✓ | N/A | ✓ | ✓ | N/A | N/A | N/A | ✓ | N/A | A specific policy relating to the use of the large underground voids created as a result of the extraction of rock salt for the storage of hazardous waste. One facility already exists in Cheshire (Minosus at the Winsford Rock Salt Mine). This is a policy for a very specific type of development which is important for development control purposes should further applications for the underground storage of hazardous waste be received. | Save |
| 36 | Design   | ✓ | ✓ | ✓ | N/A | ✓ | ✓ | N/A | N/A | ✓   | ✓ | N/A | This policy is necessary for development control purposes. It seeks to ensure that built waste management facilities are of a high quality to aid their integration into the townscape/landscape, maximise functionality and reduce impacts. This is a key policy to changing the perception of waste management facilities and their acceptance by local communities.   | Save |

## **CHESHIRE EAST COUNCIL**

### **REPORT TO: Environment and Prosperity Scrutiny Committee**

---

**Date of Meeting:** 25 November 2009  
**Report of:** John Knight, Head Of Planning and Policy  
**Subject/Title:** Local Development Framework: Annual Monitoring Report

---

#### **1.0 Report Summary**

- 1.1 The Council is required to submit an Annual Monitoring Report to the Secretary of State in respect of the implementation of Saved Local Plans and any Local Development Documents during 2008/9.

#### **2.0 Recommendations**

- 2.1 That the Portfolio Holder for Performance and Capacity be recommended to approve the submission of the Annual Monitoring Report to the Government Office for the North West.

#### **3.0 Reasons for Recommendations**

- 3.1 To ensure the Annual Monitoring Report is submitted by the 31<sup>st</sup> December 2009 deadline.

#### **4.0 Wards Affected**

- 4.1 All

#### **5.0 Local Ward Members**

- 5.1

#### **6.0 Policy Implications including**

- 6.1 The Annual Monitoring Report includes data on Climate Change

#### **7.0 Financial Implications for Transition Costs**

- 7.1 None

#### **8.0 Financial Implications 2009/10 and beyond**

- 8.1 None

**9.0 Legal Implications**

9.1 None

**10.0 Risk Management**

10.1 Failure to submit the Annual Monitoring Report by the 31<sup>st</sup> December deadline could result in a reduction in Housing and Planning Delivery Grant.

**11.0 Background and Options**

11.1 All Planning authorities are required to make an Annual Report to the Secretary of State containing information on the implementation of the Local Development Scheme and the extent to which the policies in Local Development Documents and saved Local Plans are being achieved.

11.2 This years' Annual Monitoring Report (AMR) covers the period 1<sup>st</sup> April 2008 to 31<sup>st</sup> March 2009 and consequently addresses performance for the four former local authorities and their Local Plans.

11.3 A draft AMR is being prepared. A hard copy of the document as it stands has been sent to Members under separate cover and at your meeting a presentation will be made in respect of the key findings; a copy of the presentation slides is attached to this report. Members will note that the document is still very much a draft and contains some gaps in information. These gaps will be filled prior to final consideration by the Portfolio Holder.

**12.0 Overview of Year One and Term One Issues**

12.1 None

**13.0 Access to Information**

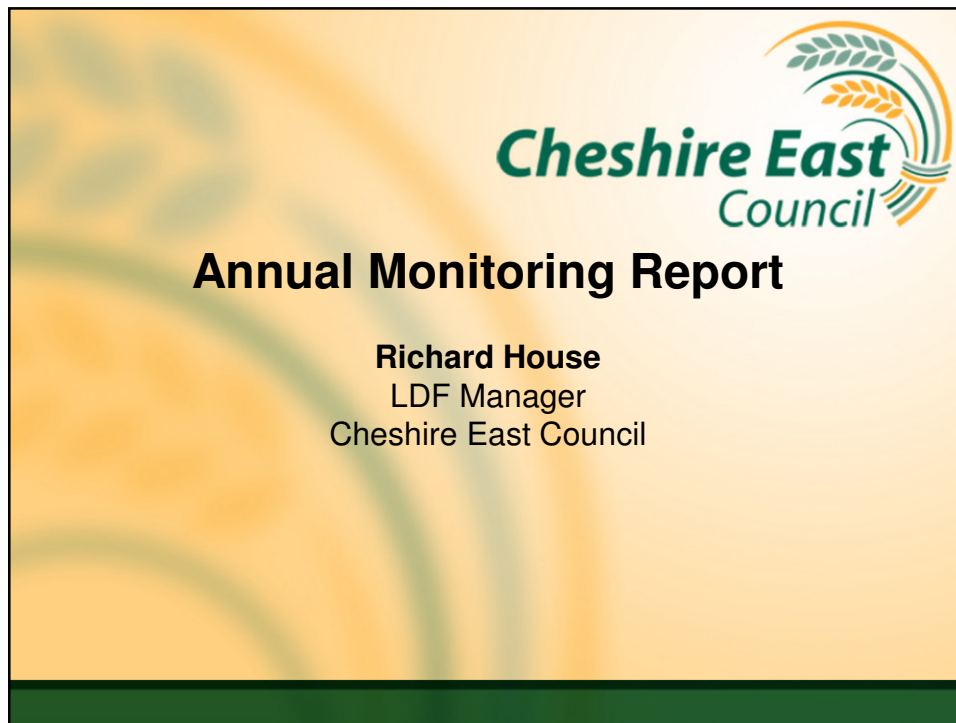
The background papers relating to this report can be inspected by contacting the report writer:


Name: Richard House

Designation: Local Development Framework

Tel No: 01270 529767

Email: Richard.House@[cheshireeast.gov.uk](mailto:Richard.House@cheshireeast.gov.uk)



|  |   |
|--|---|
|  | <br><b>Why Do We Monitor?</b>  |
|  | <ul style="list-style-type: none"><li>● The Council is statutorily required to produce an Annual Monitoring Report (AMR)</li><li>● The AMR covers the period 1<sup>st</sup> April – 31<sup>st</sup> March each year; the report <b>MUST</b> be submitted to the Secretary of State by 31<sup>st</sup> December each year</li><li>● The AMR is seen as a useful means of ensuring that the Council's policies to manage new development are being implemented, and are having the desired effect</li><li>● The AMR can provide evidence to support policy and development management decisions</li></ul> |

## What Do We Monitor?

**The Government has published guidance that sets out the information to be included within the AMR; as a minimum, the report must:**

- Review actual progress in terms of Local Development Document (LDD) preparation against the timetable and milestones set out in the Local Development Scheme (LDS);
- Assess the extent to which policies in LDDs are being implemented;
- Where policies are not being implemented, explain why and set out what steps are to be taken to ensure that the policy is implemented;
- Identify the significant effects of implementing policies in LDDs and whether they are as intended; and
- Set out whether policies are to be amended or replaced.

## Format of the AMR 2008 / 09

- Cheshire East Council has six Local Development Plans which contain a suite of 'saved policies' that must be implemented



- Cheshire East must implement and monitor the policies in these plans until a replacement Local Development Framework (LDF) is prepared
- The AMR 2008 / 09 comprises:
  - **Main AMR Document:** provides an overview of planning and development activity within the authority's area
  - **Technical Appendix:** provides detailed information down to former District level where possible for the indicators included in the main report
  - **Minerals and Waste Monitoring Report:** meets the authority's obligations regarding the Sustainability Appraisal of the Cheshire Replacement Waste Local Plan.



## Local Development Scheme

Only four of the fourteen Local Development Documents had milestones within the 2008 – 09 monitoring period. These are shown below.

| Title               | Status | Next Milestone                    | Timescale           | On Target | Comment  |
|---------------------|--------|-----------------------------------|---------------------|-----------|--|
| Core Strategy       | DPD    | Reg 25 Consultation               | Jan 2009 – Oct 2010 |           | No public consultation has been undertaken at this time, but targeted stakeholder consultation has commenced.  |
| Alsager Town Centre | SPD    | Adoption & Publication            | September 2009      |           | This document has been slightly delayed due to new Council decision-making procedures. Anticipated adoption in early 2010.   |
| Local List          | SPD    | Public participation on draft SPD | May – June 2009     |           | Priorities within the Conservation Officer Team have changed and this document has been delayed slightly. This document is expected to be available for consultation late in 2009, with adoption in Spring 2010. |
| Smallwood VDS       | SPD    | Public participation on draft SPD | June – July 2009    |           | This document has been slightly delayed due to new Council decision-making procedures. It is expected that this SPD will now be adopted Spring in 2010.  |



## Social Progress

- COI H1 – Cheshire East housing target between 2003 – 2021 is the sum of the former Borough Targets

| RSS Target    | CNBC  | CBC   | MBC   | CEC    |
|---------------|-------|-------|-------|--------|
| Total 2003-21 | 8,100 | 5,400 | 7,200 | 20,700 |
| Annual        | 450   | 300   | 400   | 1,150  |

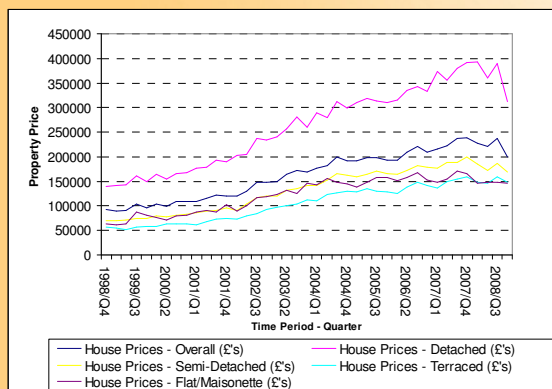
- COI H2a-b: Net housing additions to date as follows:

|               | CNBC  | CBC   | MBC   | CEC   |
|---------------|-------|-------|-------|-------|
| Total 2003-08 | 4,394 | 1,866 | 1,890 | 8,150 |
| 2008 / 09     | 468   | 115   | 156   | 739   |

- Work on producing a 'housing trajectory' and calculation of 5 year supply ongoing.

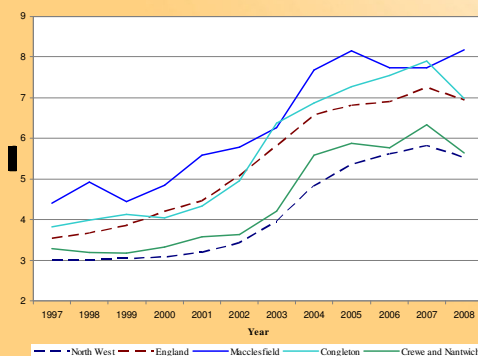
## Social Progress

- Sharp house price falls in 2008 preceded by steady increases over 10-15 year period.



## Social Progress

- House price increases have historically been increasing at a quicker rate than income increases (up to 2008) leading to increasing affordability problems





## Social Progress

- To alleviate affordability problems all former Districts have developed planning policies to support affordable housing provision
- Provision to date shown in table below (COI H5). A Strategic Housing Market Assessment (SHMA) has been commissioned to investigate how LDF can further meet housing needs of residents of Cheshire East

|                    | 2008/09 | 2007/08 | 2006/07 | 2005/06 |
|--------------------|---------|---------|---------|---------|
| Cheshire East      | 391     | 276     | 226     | 405     |
| Crewe and Nantwich | 101     | 32      | 59      | 63      |
| Congleton          | 123     | 104     | 105     | 264     |
| Macclesfield       | 167     | 140     | 62      | 78      |

## Sustainable Economic Growth

- Total amount of employment floorspace completed in Cheshire East in 2008 / 09 was approximately 95,000 sqm (gross – COI BD1).
- 61% was for B8 use, 23% was for B1a use
- All B8 floorspace was completed in the former Crewe & Nantwich Borough, along with 71% of the B1a development.

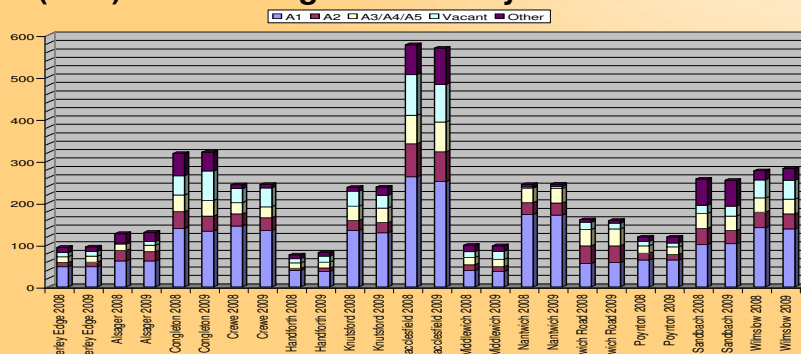
|             | Gross Floorspace (sqm) | Net Floorspace (sqm) |
|-------------|------------------------|----------------------|
| B1a         | 21,912.1               | 21,892.1             |
| B1b         | 7,695                  | 4,347                |
| B1c         | 250                    | 250                  |
| B2          | 881.4                  | 839.2                |
| B8          | 56,776.5               | 55,781.5             |
| Mixed Use   | 6,916                  | 5,569                |
| Sui Generis | 0                      | 0                    |


## Sustainable Economic Growth

- Cheshire East has total employment land supply of 306.66 Ha (COI BD3)
- Nearly 80% of the supply is for mixed use economic development
- 44% of the total supply is in the former Crewe & Nantwich Borough; 31% of the supply is in the former Congleton Borough; 24% of the supply is in the former Macclesfield Borough
- Four sites account for 56% of the supply (Basford East & West, Midpoint 18 and South Macclesfield Development Area)
- An Employment Land Review is underway to support LDF policies on future employment sites

## Sustainable Economic Growth

- Average vacancy rate across Cheshire East has risen to 13.6%, up from 12.1% last year. The national average is around 12.5%.
- Handforth (17%), Crewe (18.4%) and Congleton (22%) have the highest vacancy rates






## Sustainable Economic Growth

- Over 11,000 sqm of gross 'town centre' floorspace was developed in Cheshire East in 2008 / 09
- 37% of the total completed floorspace was developed within town centres
- 86% of the development completed in out-of-centre locations was for B1a office use
- These developments came forward in accord with existing Local Plan Policies

| Uses Classes | Town Centres |         | LPA Area Total |         |
|--------------|--------------|---------|----------------|---------|
|              | Gross sqm    | Net sqm | Gross sqm      | Net sqm |
| A1           | 3590         | 3112    | 4485           | 4007    |
| A2           | 355          | 355     | 400            | 400     |
| B1a          | 176          | -44     | 6273           | 6053    |
| D2           | 0            | 0       | 0              | 0       |



## Protection & Enhancement of the Environment

### Cheshire East: Historic Environment

- 78 conservation areas of varying size and scale
- 2,644 national listings for historic buildings (one listing may cover a number of buildings)
- 108 Scheduled Ancient Monuments
- 17 registered parks and gardens of historic interest
- 10 areas of archaeological potential
- 1 registered battlefield

## Protection & Enhancement of the Environment



### Cheshire East: Historic Environment

- 1 listed building was lost in 2008 / 09: this was due to the building falling down as a result of falling into disrepair, not development activity
- No scheduled monuments have been lost
- 31 conservation area appraisals have been completed in Cheshire East

## Protection & Enhancement of the Environment



### Cheshire East: Natural Environment

- COI: E2 – Changes in areas of biodiversity importance
- Some improvements to existing sites and provision of new habitat at Millennium Wood
- Losses have occurred due to boundary reviews at certain sites

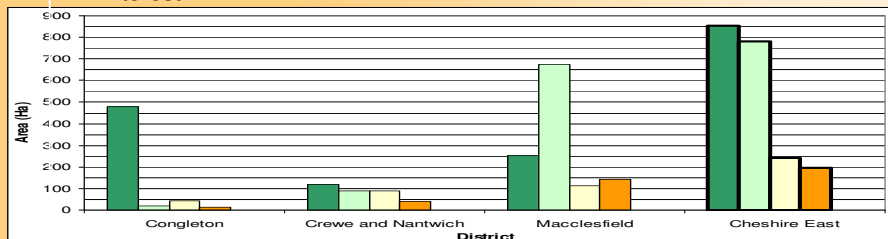
| Habitat Type | Negative Change  | Positive Change  |
|--------------|--|--|
| SBI          | <b>Folly Cottage Meadow and Wood:</b><br>Loss of 7.49ha.<br><b>Brereton Plantation:</b><br>Loss of 7.49ha. | <b>Cheshire's Close:</b> Changes to boundary (total area remains the same).<br><b>Congleton Edge:</b> Upgrade - Grade C to A.<br><b>Congleton Edge:</b> Gain of 0.2ha.<br><b>Big Mere, Marbury:</b> Upgrade - Grade B to A<br><b>Brereton Plantation:</b> Upgrade - Grade C to A<br><b>Reaseheath Pasture:</b> Changes to boundary (total area remains the same) |
| RIGGS        | -  | -  |
| LNR          | -  | <b>Millennium Wood:</b> Formation of an new nature reserve covering 9.65ha<br><b>Brereton Heath:</b> Gain of 1ha. Habitat improvement on site.   |

## Protection & Enhancement of the Environment



### Cheshire East: Natural Environment

No planning applications received affecting Sites of Special Scientific Interest



|  | Congleton | Crewe and Nantwich | Macclesfield | Cheshire East |
|--|-----------|--------------------|--------------|---------------|
| Area in favourable condition (Ha)              | 479.71    | 118.82             | 253.54       | 852.07        |
| Area in unfavourable recovering condition (Ha) | 19.28     | 89.7               | 672.95       | 781.93        |
| Area in unfavourable no change condition (Ha)  | 42.96     | 88.23              | 111.57       | 242.76        |
| Area in unfavourable declining condition (Ha)  | 11.78     | 41.02              | 142.98       | 195.78        |
| Area in unknown condition (Ha)                 | 0         | 0                  | 0.98         | 0.98          |
| Total (Ha)                                     | 553.73    | 337.77             | 1182.02      | 2073.52       |

## Prudent Use of Natural Resources




### Land-Take

- COI BD2 – Of the 95,000 sqm of employment floorspace developed in Cheshire East, 66% was on previously developed land
- COI H3 – Of the 870 new or converted dwellings completed in 2008 / 09 in Cheshire East, 77% (667) were developed on previously developed land

|  |  |
|--|--|
|  | <div data-bbox="410 336 884 434" data-label="Section-Header"> <h2>Prudent Use of Natural Resources</h2> </div> <div data-bbox="1027 306 1257 412" data-label="Image"> </div>   |
|  | <div data-bbox="406 463 817 512" data-label="Section-Header"> <h3>Waste Management</h3> </div> <div data-bbox="430 526 1197 792" data-label="List-Group"> <ul style="list-style-type: none"> <li>• COI W2 – Across Cheshire (including CWAC) in 2007/08 427,000 tonnes of Municipal Solid Waste was generated</li> <li>• 58.9% (252,000 tonnes) of this waste went to landfill</li> <li>• 41% (175,000 tonnes) was recycled or composted</li> </ul> </div> |

|  |   |
|--|---|
|  | <div data-bbox="410 1267 884 1366" data-label="Section-Header"> <h2>Prudent Use of Natural Resources</h2> </div> <div data-bbox="1027 1238 1257 1344" data-label="Image"> </div>  |
|  | <div data-bbox="406 1393 861 1442" data-label="Section-Header"> <h3>Minerals Management</h3> </div> <div data-bbox="430 1456 1197 1706" data-label="List-Group"> <ul style="list-style-type: none"> <li>• COI M1 – Across Cheshire (including CWAC) in 2007 approximately 1.53 million tonnes of minerals aggregate was extracted</li> <li>• COI M2 – In 2006 across Cheshire (including CWAC) approximately 596,000 tonnes of material was reclaimed as 'secondary / recycled aggregate'</li> </ul> </div> |

|  |   |
|--|---|
|  |  <h2>Climate Change</h2>   |
|  | <ul style="list-style-type: none"> <li>● <b>National Indicator 186 – CO2 emissions per capita:</b> <ul style="list-style-type: none"> <li>– Congleton – 7.6</li> <li>– Crewe &amp; Nantwich – 7.1</li> <li>– Macclesfield – 8.2</li> </ul> </li> <li>● <b>All down from the previous year</b></li> <li>● <b>COI E3 - Installed renewable energy capacity in Cheshire East 2008 / 09:</b> <ul style="list-style-type: none"> <li>– A solar photovoltaic system was installed at Middlewich County Primary School. The installed capacity was 2.9MW.</li> <li>– 3 solar panels were installed at The Outlanes, Nantwich Road, Church Minshull. The installed capacity was not given in the planning application.</li> <li>– Solar panels have been installed at Bickerton Village Hall, Hall Long Lane, Bickerton. The installed capacity is 4.1MW.</li> </ul> </li> <li>● <b>Need to investigate means of increasing renewable energy generation in Cheshire East</b></li> </ul> |

This page is intentionally left blank



## **CHESHIRE EAST COUNCIL**

### **REPORT TO: ENVIRONMENT AND PROSPERITY SCRUTINY COMMITTEE**

---

**Date of Meeting:** 25 November 2009  
**Report of:** Borough Solicitor and Monitoring Officer  
**Subject/Title:** Forward Plan

---

#### **1.0 Report Summary**

- 1.1 To consider the forward plan in relation to the remit of this Committee

#### **2.0 Recommendations**

- 2.1 That the Committee note the forward plan, identify any new items and determine whether any further examination of new issues is appropriate.

#### **3.0 Reasons for Recommendations**

- 3.1 The forward plan can be a useful tool for scrutiny to assist with identifying future items for consideration.

#### **4.0 Wards Affected**

- 4.1 All

#### **5.0 Local Ward Members**

- 5.1 Not applicable

#### **6.0 Policy Implications**

- 6.1 Not known at this stage

#### **7.0 Financial Implications for Transition Costs**

- 7.1 None identified at the moment

#### **8.0 Financial Implications 2009/10 and beyond**

- 8.1 Not known at this stage

#### **9.0 Legal Implications**

9.1 None

**10.0 Risk Management**

10.1 There are no identifiable risks

**11.0 Background and Options**

11.1 Relevant extracts from the forward plan that relate to the area of Environment and Prosperity Scrutiny Committee are attached to this report for the Committee to note, consider any new items and decide whether any further examination of new issues as appropriate.

**12.0 Overview of Year One and Term One Issues**

12.1 it is good practice for scrutiny to regularly consider the Forward Plan in so far as it relates to the Committee's remit.

**13.0 Access to Information**

The background papers relating to this report can be inspected by contacting the report writer:

Name: Katie Smith

Designation: Scrutiny Officer

Tel No: 01270 529771

Email: [katie.smith@cheshireeast.gov.uk](mailto:katie.smith@cheshireeast.gov.uk)

| <b>Key Decision</b>                         | <b>Decisions to be Taken</b>   | <b>Decision Maker</b> | <b>Expected Date of Decision</b> | <b>Proposed Consultation</b>  | <b>How to make representation to the decision made</b> |
|---|--|-----------------------|----------------------------------|---|--|
| CE09/10-06<br>Crewe Green Link Road Project | To consider a highways scheme to open up a strategic employment site at Basford East, to adopt the business case, refresh a decision to make a compulsory purchase order, and to note the financial implications and risk. | Cabinet               | Before 31 Jan 2010               | Statutory consultations have been carried out and will continue at each stage of the process.   | John Nicholson, Strategic Director Places              |
| CE09/10-21<br>Community Transport Strategy  | To determine the future basis for procurement and integration of community transport and other pre booked transport services.  | Cabinet               | Before 31 Jan 2010               | Consultation and stakeholder engagement was included within the preparation of the community transport strategy produced by Cheshire County Council and adopted by this Council. Current consultation is being carried out with the two main service providers. | John Nicholson, Strategic Director Places              |

|   |         |                    |  |   |
|---|---------|--------------------|--|---|
| To enter into a contract with the North West Development Agency to develop pedestrian and cycle links between Nantwich and employment sites in Crewe. | Cabinet | Before 31 Jan 2010 | Local consultation has taken place as part of the development of the proposal and will continue prior to implementation. | John Nicholson, Strategic Director Places |
| To implement a Fixed Penalty Notice Scheme with Cheshire East for Utility Company Noticing Offences.  | Cabinet | Before 31 Jan 2010 | Through the Scrutiny Committee process and with all the Utility Companies that operate in Cheshire East.                 | John Nicholson, Strategic Director Places |

## **CHESHIRE EAST COUNCIL**

### **REPORT TO: ENVIRONMENT AND PROSPERITY SCRUTINY COMMITTEE**

---

|                         |  |
|-------------------------|--|
| <b>Date of Meeting:</b> | 25 November 2009                         |
| <b>Report of:</b>       | Borough Solicitor And Monitoring Officer |
| <b>Subject/Title:</b>   | Work Programme                           |

---

#### **1.0 Report Summary**

- 1.1 To consider further the items proposed for inclusion in the Committee's Work Programme and determine which items should be included in the Work Programme for the current municipal year.

#### **2.0 Recommendations**

- 2.1 That the Committee agree its Work Programme.

#### **3.0 Reasons for Recommendations**

- 3.1 It is good practice to agree a Work Programme to enable effective management of the Committee's business.

#### **4.0 Wards Affected**

- 4.1 All

#### **5.0 Local Ward Members**

- 5.1 Not applicable.

#### **6.0 Policy Implications including**

- 6.1 Not known at this stage.

#### **7.0 Financial Implications for Transition Costs**

- 7.1 None identified at the moment.

#### **8.0 Financial Implications 2009/10 and beyond**

- 8.1 Not known at this stage.

#### **9.0 Legal Implications**

9.1 None.

## **10.0 Risk Management**

10.1 There are no identifiable risks.

## **11.0 Background and Options**

11.1 At the last meeting of the Committee, Members considered a list of potential items for the Work Programme.

11.2 The Committee is now invited to consider and determine a Work Programme, decide a priority order, agree timescales and methodology – for example, whether items should be dealt with by a Task/Finish Panel, at the main Committee etc.

11.3 To assist the Committee, each of the issue highlighted in the work programme should be assessed against the following criteria:

- Does the issue fall within a corporate priority
- Is the issue of key interest to the public
- Does the matter relate to a poor or declining performing service for which there is no obvious explanation
- Is there a pattern of budgetary overspends
- Is it a matter raised by external audit management letters and or audit reports.
- Is there a high level of dissatisfaction with the service

If during the assessment process any of the following emerge, then the topic should be rejected:

- The topic is already being addressed elsewhere
- The matter is subjudice
- Scrutiny cannot add value or is unlikely to be able to conclude an investigation within the specified timescale

## **12.0 Overview of Year One and Term One Issues**

12.1 It is good practice to have a Work Programme for the Committee to consider and prioritise on a regular basis.

## **13.0 Access to Information**

The background papers relating to this report can be inspected by contacting the report writer:

Name: Katie Smith  
Designation: Scrutiny Officer  
Tel No: 01270 529771  
Email: [katie.smith@cheshireeast.gov.uk](mailto:katie.smith@cheshireeast.gov.uk)

## Environment and Prosperity Scrutiny Committee

| <b>Issue</b>  | <b>Priority</b> | <b>Comment</b>  | <b>Date</b>  |
|---|-----------------|---|--|
| Climate Change  | Medium          | Council Priority  | 25 November 2009   |
| Economic Development Strategy and Sub Regional Architecture – Interim Statement | High            | This issue is a priority for the Portfolio Holder             | 25 November 2009   |
| Visitor Economy Strategy  | High            | This is a priority for the Portfolio Holder                   | 25 November 2009   |
| Presentation on the Integrated Transport Unit                                   | High            | This is a priority for the Portfolio Holder                   | 25 November 2009   |
| Performance Management Mid Year Review  | High            | Agreed on 23 September 2009                                   | 25 November 2009   |
| Annual Monitoring Report (LDF)  | High            | Agreed on 23 September 2009                                   | 25 November 2009   |
| Cheshire Waste Local Plan – Saved Policies                                      | High            |   | 25 November 2009   |
| Town Centres Redevelopment  | High            | This issue is a priority for the Portfolio Holder             | 20 January 2010  |
| Local Transport Plan 3  | Medium          |   | 20 January 2010  |
| Crewe Vision  | Medium          |   | 20 January 2010  |
| Strategic Highways  | Medium          |   | 20 January 2010  |
| Waste PFI   | High            | Priority Issue  | Arrange a special meeting after 20 January 2010  |
| Annual Progress Report on Air Quality   | Medium          | It was agreed that this issue should be deferred for 6 months | 25 March 2010  |
| Queens Restoration  | Medium/High     | To monitor the Queens Park Restoration Project                | This scheme is being implemented. Delete from work programme                                 |
| Crewe Crematorium   |                 | This issue is a priority for the Portfolio Holder.            | Possible Task and Finish Group to commence in March  |
| Parking Charges   | High            |   | Set up a task and Finish Group to commence immediately and to be completed by early February |
| Recycling Harmonisation   | Medium          |   | Set up a task and  |

|                                  |        |  |  |
|----------------------------------|--------|--|--|
|                                  |        |  | finish group, to commence in January                 |
| Renewal of Nutalls Term Contract | Medium |  | Set up a task and finish group, to commence in March |
| Budget                           |        |  | TBA  |

### **Possible Future Items**

Community Transport Strategy  
 Environmental Enforcement  
 Affordable Warmth Strategy  
 Empty Homes Strategy  
 Affordable Housing Strategy  
 Older Persons Housing Strategy  
 Homelessness Strategy  
 Fixed Penalty Notices for Street Works

### **Dates of Future Meetings**

25 November 2009  
 20 January 2010  
 24 March 2010

### **Dates of Future Cabinet Meetings**

1 December 2009  
 22 December 2009  
 19 January 2010  
 16 February 2010  
 16 March 2010  
 20 April 2010  
 18 May 2010